

Zoellner Carl 1830 1911 neg 380 * R31
Zoellner Carl F * R31
Zoellner Carl F 1865 1927 neg * R31
Zoellner Caroline 1842 1921 neg * R31
Zoellner Mutter * R31
Zoellner Vater * R31
Zoellner Veilchen * R31
Zoellner Wilhelmine * R31
Zorn Christian 1849 1922 neg * R41
Zorn Herman 1875 1912 neg 578 * R41
Zorn Sophia 1849 1941 neg * R41
Zorn Wilhelmine 1871 1961 neg
Zorn William 1871 1954 neg 163

The **population** of Warren Township was 249 in 1837, 337 in 1840, and 421 in 1845. In 1850 700-750. There was even quicker growth as population figures show. 997 in 1854, 1335 in 1860, 1468 in 1864, 1938 in 1870, 2214 in 1874, 2401 in 1880, 2384 in 1884, 2423 in 1890, 2592 in 1894. 1904 population of Warren Township was 2498.

1850	750	32.48	1871	2000	76.6	This last figure is probably persons per square mile
1851	800	34.64	1872	2000	76.6	
1852	850	36.81	1873	2000	76.6	
1853	900	38.97	1874	2000	76.6	
1854	997	43.17	1875	2000	76.6	
1855	1000	43.3	1876	2200	84.26	
1856	1100	47.63	1877	2200	84.26	
1867	1180	51.09	1878	2200	84.26	
1858	1200	51.96	1879	2200	84.26	
1859	1300	56.29	1880	2230	78.5	
1860	1335	53.4	1881	2300	80.96	
1861	1360	56.3	1882	2300	80.96	
1862	1380	57.13	1883	2300	80.96	
1863	1400	57.96	1884	2384	83.92	
1864	1468	60.78	1885	2384	83.92	
1865	1500	62.1	1886	2384	83.92	
1866	1600	66.24	1887	2384	83.92	
1867	1700	70.38	1888	2400	84.48	
1868	1800	74.52	1889	2400	84.48	
1869	1860	77	1890	2423	76.32	
1870	1938	74.23	1891	2500	78.75	
1146.	37		1892	2500	78.75	
200	1000		1893	2500	78.75	
100	500		1894	2592	81.65	
20	100		1895	2600	81.9	
1896			2600	81.9		

1897	2600 81.9
1898	2600 81.9
1899	2600 81.9
1900	2500 75
1901	2500 75
1904	2498 74.94
1905	2500 75
1906	2500 75
1920	2500 75
3774.71	
1146.37	
births 4921.08	984.22
Infant Mort Rate 200/1000=	.2 984.22

INFANT AND MATERNAL MORTALITY

216 babies died before age 1 in 1800s per 1000 population

1900 6-9 women died of pregnancy and 100 infants died before age 1 per 1000(CDC)

Of recorded deaths in Warren Township 50% were children.

98% still born and baby deaths not reported in Warren Township.

In 1900 in some U.S. cities, up to 30% of infants died before reaching their first birthday (1).

Warren Union Cemetery has 150 child markers

Since Warren Union Cemetery has about 1000 burials

add 150-200 infant deaths due not recorded

PRESENTS THE POSSIBILITY OF 1,500-2000 ADDITIONAL UNMARKED CHILD BURIALS AT WARREN UNION CEMETERY

See Economic History Association Table next page

<http://eh.net/encyclopedia/article/haines.demography>

Notes

Milk pasteurization, first adopted in Chicago in 1908, contributed to the control of milkborne diseases (e.g., gastrointestinal infections) from contaminated milk supplies.

The discovery and widespread use of antimicrobial agents (e.g., sulfonamide in 1937 and penicillin in the 1940s) and the development of fluid and electrolyte replacement therapy and safe blood transfusions accelerated the declines in infant mortality; from 1930 through 1949, mortality rates declined 52% (4). The percentage decline in postneonatal (age 28-364 days) mortality (66%) was greater than the decline in neonatal (age 0-27 days) mortality (40%).

Maternal mortality rates were highest in this century during 1900-1930 Most births occurred at home with the assistance of midwives or general practitioners. Inappropriate and excessive surgical and obstetric interventions (e.g., induction of labor, use of forceps, episiotomy, and cesarean deliveries) were common and increased during the 1920s. Deliveries, including some surgical interventions, were performed without following the principles of asepsis. As a result, 40% of maternal deaths were caused by sepsis (half following delivery and half associated with illegally induced abortion) with the remaining deaths primarily attributed to hemorrhage and toxemia (2).

(CDC) <http://eh.net/encyclopedia/article/haines.demography>

Birth rate a Child-Woman Ratio b Total Fertility Rate c Life Expectancy d Infant Mortality less knowledgeable doctors

YEAR				e
1800	55	1342	7.04	220
1810	54.3	1358	6.92	220
1820	52.8	1295	6.73	220
1830	51.4	1145	6.55	220
1840	48.3	1085	6.14	220
1850	43.3	892.5	.42 39.5	216.8 220
1860	1.4	905	5.21 43.6	181.3 200
1870	38.3	814	4.55 45.2	175.5 190
1880	35.2	780	4.24 40.5	214.8 230
1890	31.5	685	3.87 46.8	150.7 180
1900	30.	1 666	3.56 51.8k	110.8k 130

a Births per 1000 population per annum.

e Infant deaths per 1000 live births per annum.

So $40/1000 = .04$

St Clement Cemetery

From 1861-1897 there were 15-20 child burials for every 10 adults average

And these are just the ones that made the record book. There were actually more.

year child burials per adult burials over 2x

1854	1 1	12 times as many children than adults buried this year
1855	0 0	1 yr 4x
+ 1856	1 3	4 yr 3x
- 1857	5 9	
+ 1858	7 4	-2x
- 1859	3 8	
- 1860	4 8	
+ 1861	8 2	4x
+ 1862	10 6	-2x
+ 1863	6 3	These are from records but there are many missing
+ 1864	8 6	
+ 1865	11 6	-2x
+ 1866	11 6	-2x
+ 1867	6 5	
+ 1868	3 3	
+ 1869	12 1	12x
+ 1870	14 6	+2x

+ 1871	24 8 3x	
+ 1872	14 4 0.59 +3x	
+ 1873	16 7 170/101	+2x
+ 1874	6 5 1.68	
= 1875	8 8	
+ 1876	14 10 -1.5x	
+ 1877	13 8	
+ 1878	11 10	
- 1879	9 14	
+ 1880	13 10	
+ 1881	13 11	
- 1882	8 11	
+ 1883	15 8 -2x	
+ 1884	19 11 -2x	
+ 1885	11 6 -2x	
+ 1886	12 8 316/216 1.5x	
- 1887	15 17 1.46	
+ 1888	24 7 +3x	
+ 1889	11 8 1.48	
+ 1890	17 10 366/248 -2x	
- 1891	9 13	
+ 1892	13 6 +2x	
+ 1893	9 7 AS MEDICAL KNOWLEDGE IMPROVED CHILD DEATHS WENT	
DOWN		
= 1894	8 8	
+ 1895	14 18	
+ 1896	21 10 +2x 1.51 1861-1897	
+ 1897	15 12 451 299	
- 1898	1 9 prior to 1900	
- 1899	5 9	

Only 28 markers found listing children

478	350 1.37	
- 1900	6 8	
- 1901	6 13 1.35	
- 1902	1 6	
- 1903	6 7	
= 1904	8 8	
- 1905	5 10	
+ 1906	15 12 -1.5	
- 1907	0 2	
- 1912	4 14	
+ 1913	12 5 -3x	
+ 1914	11 8 -1.5	

- 1915 6 14
- 1916 6 13
- 1917 2 13
- 1918 6 12
+ 1919 14 11
+ 1920 5 4
- 1921 2 3 0.87
593 513 1.16

Only 28 markers were found listing children
only 1 Marker found for children prior to 1900
2345

Thomas Oct 27 1858 15 yrs

67

Finn John 1884-1884

8 Finn Margaret 1880-1881

9

10

11

12

13

14

15 Japes Angela 1822-1838?

16 Japes Maria E 1861-1886

17

18

19

20

21

22

23

24

25

26

27

28

Bierman aurelia Jun 1895 20mo

Campbell Margaret aug 1879

Dunn Thomas d 1859-ag 15

Engleman Aloysius 1875 2 mo 21 days

Friedhoff Valentin b 1856

Gill Annie d 1880 ag 12

Groesbedk Alice Leona

Groesbeck Remi 1878 Oct 1879

Halmich Ehantz 1828-1835

Halmich Augus 1838

Kaltz Edna 1882 – 1883

Klinghammer William 1869-1876

Magam Bridget 1866 a 9 months

Rickabus Frank 1885-1892
Friedhoff Valentin 1855 -
Rozanna Mary 1878- 1891
Rumph Rosa d1884 4 yrs
Rumph Caecelia d 1884 ag 2 yrs
Schnioblen Margarate d 1875 11 yrs?
Schuster Baby
Trombley Wilbert 1880 ag 17
Wold Johnny 1888-1891 ag 2
Bickman Frank 1900 or 01- 1902
Greene Clifford Feb 1902-Jun 22 1902
Grobbel 1901 1911 may
Jenuwine Harold J 1901-1919

DISEASES in 1800s

Consumption is an old name for tuberculosis (TB) that describes how the illness wastes away or consumes its victims. TB is "an ancient enemy" that has plagued humankind for more than five thousand years. The Greeks called it phthisis, and Hippocrates advised his medical students against treating it, because it was almost always deadly, and a dead patient was bad for business.

Caused by a highly contagious bacterial infection, TB is blamed for 20% of the deaths in 17th-century London and 30% of those in 19th-century Paris (as depicted in *Moulin Rouge*). In those days, the disease proved deadly for about 80% of its victims. It's estimated that TB has killed over 1 billion people in the last two centuries.

In the past, patients were usually sent to a sanatorium, where a healthy climate (fresh air) and good nutrition were believed to combat the infection. Later, pneumothorax was used, a treatment that collapses the lung then allows it to heal. In the 1940s, advances in science led to the development of several drugs that proved effective against TB. The incidence of the disease began to drop, and it was believed that TB would be extinct by 2010.

Unfortunately, TB is far from being a disease of the past. An effective course of drug therapy lasts 6-8 months, and many patients discontinue the antibiotics before completing the whole regimen. To make matters worse, the TB strain continues to mutate and evolve, becoming more and more drug-resistant. And poverty and the AIDS epidemic, which weakens the immune system making it ripe for attack, have also helped lead to a resurgence of the disease. Every year, about 8 million people contract TB and 3 million die from it.

Diphtheria (Greek διφθέρρα (diphthera) "pair of leather scrolls") is an upper respiratory tract illness caused by *Corynebacterium diphtheriae*, a facultative anaerobic Gram-positive bacterium.[1][2] It is characterized by sore throat, low fever, and an adherent membrane (a pseudomembrane) on the tonsils, pharynx, and/or nasal cavity.[3] A milder form of diphtheria can be restricted to the skin. Uncommon consequences include myocarditis (about 20% of cases) [4] and peripheral neuropathy (about 10% of cases).[5]

Diphtheria is a contagious disease spread by direct physical contact or breathing the aerosolized secretions of infected individuals. Historically quite common, diphtheria has largely been eradicated in industrialized nations through widespread vaccination. In the United States for example, there were 52 reported cases of diphtheria between 1980 and 2000; between 2000 and 2007 there were only three cases[6] as the DPT (Diphtheria–Pertussis–Tetanus) vaccine is recommended for all school-age children. Boosters of the vaccine are recommended for adults since the benefits of the vaccine decrease with age without constant re-exposure; they are particularly recommended for those traveling to areas where the disease has not been eradicated.

Scarlet fever is a term used for strep throat with a rash. Scarlet fever is most common in children ages

2 to 10, but it can affect people of any age. Scarlet fever is caused by streptococcal (strep) bacteria, the same bacteria that cause strep throat. There are many different strains of strep bacteria, some of which cause more serious illness than others. The type of strep that infects the throat and causes scarlet fever is called group A beta-hemolytic streptococcus (GABS).

It is characterized by: Sore throat Fever

Bright red tongue with a "strawberry" appearance

Characteristic rash, which: is fine, red, and rough-textured; it blanches upon pressure. appears 12–48 hours after the fever. generally starts on the chest, armpits, and behind the ears.

sparing the face (although some circumoral pallor is characteristic).

is worse in the skin folds. These Pastia lines (where the rash runs together in the armpits and groin) appear and can persist after the rash is gone. may spread to cover the uvula.

The rash begins to fade three to four days after onset and desquamation (peeling) begins. "This phase begins with flakes peeling from the face. Peeling from the palms and around the fingers occurs about a week later." [3] Peeling also occurs in axilla, groin, and tips of the fingers and toes. [4]

Diagnosis of scarlet fever is clinical. The blood test shows marked leukocytosis with neutrophilia and conserved or increased eosinophils, high erythrocyte sedimentation rate (ESR) and C-reactive protein (CRP), and elevation of antistreptolysin O titer. Blood culture is rarely positive, but the streptococci can usually be demonstrated in throat culture. The complications of scarlet fever include septic complications due to spread of streptococcus in blood and immune-mediated complications due to an aberrant immune response. Septic complications -- today rare -- include ear and sinus infection, streptococcal pneumonia, empyema thoracis, meningitis and full-blown sepsis, upon which the condition may be called malignant scarlet fever.

Immune complications include acute glomerulonephritis, rheumatic fever and erythema nodosum. The secondary scarlatinous disease, or secondary malignant syndrome of scarlet fever, includes renewed fever, renewed angina, septic ear, nose, and throat complications and kidney infection or rheumatic fever and is seen around the eighteenth day of untreated scarlet fever.

Typhoid fever, also known as typhoid, is a common worldwide illness, **transmitted by the ingestion of food or water contaminated with the feces of an infected person**, which contain the bacterium **Salmonella enterica enterica**, serovar Typhi. The bacteria then perforate through the intestinal wall and are phagocytosed by macrophages. Typhoid fever is characterized by a slowly progressive fever as high as 40 °C (104 °F), profuse sweating and gastroenteritis. Less commonly, a rash of flat, rose-colored spots may appear. Classically, the course of untreated typhoid fever is divided into four individual stages, each lasting approximately one week. In the first week, there is a slowly rising temperature with relative bradycardia, malaise, headache and cough. A bloody nose (epistaxis) is seen in a quarter of cases and abdominal pain is also possible.

Summer complaint Diarrhea, usually in infants caused by spoiled milk weaning brash, water gripes,

choleric fever of children, cholera morbus. acute gastroenteritis

Cholera infantum: A **common, noncontagious diarrhea of young children**, occurring in summer

or autumn. It was common among the poor and in hand-fed babies. Death frequently occurred in three to five days. **Synonyms: summer complaint**, weaning brash, water gripes, choleric fever of children, cholera morbus. acute gastroenteritis

The following is a list of diseases commonly cited in historic obituaries and death certificates and their present day equivalents.

A few Historic Diseases with Modern description

Ague Malarial Fever very common and no medicine available that worked

American plague Yellow fever

Aphtha The infant disease "thrush"

Apoplexy Paralysis due to stroke

Asphyxia/Asphixia Cyanotic and lack of oxygen

Atrophy Wasting away or diminishing in size.

Bilious fever Typhoid, malaria, hepatitis or elevated temperature and bile emesis

Black fever Acute infection with high temperature and dark red skin lesions and **high mortality rate**

Black plague or death Bubonic plague

Blood poisoning Bacterial infection; septicemia

Brain fever Meningitis

Bright's disease Chronic inflammatory disease of kidneys

Camp fever Typhus; aka Camp diarrhea

Canine madness Rabies, hydrophobia

Canker Ulceration of mouth or lips or herpes simplex

Child bed fever Infection following birth of a child No antibiotics were known yet

Chin cough Whooping cough

Cholera Acute severe contagious diarrhea with intestinal lining sloughing

Cholera morbus Characterized by nausea, vomiting, abdominal cramps, elevated temperature, etc.

Could be appendicitis

Chorea Disease characterized by convulsions, contortions and dancing

Cold plague Ague which is characterized by chills

Colic An abdominal pain and cramping

Congestion Any collection of fluid in an organ, like the lungs

Consumption Tuberculosis

Croup Laryngitis, diphtheria, or strep throat

Diphtheria Contagious disease of the throat

Dropsy Edema (swelling), often caused by kidney or heart disease

Dropsy of the Brain Encephalitis

Dysentery Inflammation of colon with frequent passage of mucous and blood

Encephalitis Swelling of brain; aka sleeping sickness

Enteric fever Typhoid fever

Falling sickness Epilepsy

Grippe/grip Influenza like symptoms

Grocer's itch Skin disease caused by mites in sugar or flour

Heat stroke Body temperature elevates because of surrounding environment temperature and body does not perspire to reduce temperature. Coma and death result if not reversed

Hydrophobia Rabies

Jaundice Condition caused by blockage of intestines

Lagrippe Influenza

Lockjaw Tetanus or infectious disease affecting the muscles of the neck and jaw. **Untreated, it is fatal in 8 days**

Milk fever Disease from drinking contaminated milk, like undulant fever or brucellosis

Plague An acute febrile highly infectious disease with a high fatality rate

Pleurisy Any pain in the chest area with each breath

Rheumatism Any disorder associated with pain in joints

Rickets Disease of skeletal system

Scarlet fever A disease characterized by red rash

Small pox Contagious disease with fever and blisters

Sore throat **distemper Diphtheria** or quinsy

St. Anthony's fire Also erysipelas, but named so because of affected skin areas are bright red in

appearance

St. Vitas dance Ceaseless occurrence of rapid complex jerking movements performed involuntary

Summer complaint Diarrhea, usually more in infants caused by spoiled milk however many adults died of this also. Remember they did not have any medicine for this..

Sunstroke Uncontrolled elevation of body temperature due to environment heat. Lack of sodium in the body is a predisposing cause

Tetanus Infectious fever characterized by high fever, headache and dizziness

Tussis convulsiva **Whooping cough**

Typhus Infectious fever characterized high fever, headache, and dizziness

Womb fever Infection of the uterus

Worm fit Convulsions associated with teething, worms, elevated temperature or diarrhea people got worms just like dogs in the old days. There was more than one kind of worm also.

Yellowjacket Yellow fever

Warren Township deaths 1867-1900 showed the following causes listed by frequency
HOWEVER NOTE THAT THESE ARE ONLY THE ONES RECORDED WHICH IS MUCH LESS THAN THE ACTUAL COUNT WHICH IS UNKNOWN

136 unknown most of these were stillborns or under a week old

97 consumption (now known as TB)

85 other some of these were unreadable writing

58 Diphtheria

54 heart disease

45 old age

40 accident

39 summer complaint spoiled food

39 scarlet fever

26 typhoid fever

24 inflammation of bowels

24 inflammation of lungs

23 brain disease

22 dropsy

18 cramps

17 cancer

16 bright disease

16 inflammation other than bowels or lungs

14 dysentery

14 cholera

14 paralysis

13 bronchitis

12 infantium

11 grip

11 suicide

11 croup

10 apoplexy

10 fever

9 small pox
9 fits
7 childbirth
6 inflammation of stomach
6 confinement
6 measles
5 blood poisoning
5 rheumatism
5 Tumor
3 malaria
3 bleeding
3 asthma
3 murder
3 palsey
2 whooping cough
2 insanity
2 convulsions
1 scarletina

Before 1900 most doctors were untrained and most medicines non existent or useless.

After 1900 the numbers of child deaths gradually declined and deaths from the following diseases also gradually declined: Diphtheria, summer complain, scarlet fever, typhoid fever, inflammation, dropsy, bright disease, dropsy, dysentery, cholera, infantium, grip, croup, small pox, fits, childbirth, confinement, measles, blood poisoning, malaria, whooping cough, convulsions, scarletina and deaths caused by horses.

Other causes increased such as “killed by cars”, auto accidents, airplane accidents, and deaths caused by pollution and cancer.

Today the leading causes of death are: Heart disease: Cancer: Stroke (cerebrovascular diseases): Chronic lower respiratory diseases: Accidents (unintentional injuries): Alzheimer's disease: Diabetes: Influenza and Pneumonia: Nephritis, nephrotic syndrome, and nephrosis: Septicemia: [and war] above from

<http://www.cdc.gov/nchs/fastats/lcod.htm>

Figuring the number of graves.

There arises the question of how many grave spaces are in the land area of this cemetery. That is not easy to answer. Sure in a modern cemetery you can plan out in advance how wide and long the graves will be and what aisles and paths there will be but in 1845 we only have the size of a lot.

There are 49 rows the total width is 533.36 feet divided by 49 gives an average row of 10.88 or about 11 feet that fits fairly well except at the back where things appear to get out of alignment.

I took measurements thinking OK a grave is perhaps 3 feet wide and ten feet long and the ends with a three foot aisle but those do not fit. Some lots have graves closer together some are farther apart and the aisles do not all go straight. The human body was smaller back in 1845 and most of the burials were children so that throws things off also. The average body considering that many died at a younger age was as an adult 15 inches wide a child from four inches to 12 inches wide. That is no help. The

average coffin in modern time is 28 inches wide but back then would be a little smaller. If the average body was adult was 15 inches then the coffin (widest at the shoulders) was less than 18 inches wide and they could be in times of epidemic fitted one pointing East and one pointing west to fit in the already crowded family lot, at two to a yard width. Remember many coffins were for younger persons and were hand made.

At that time there were 15-20 children buried for each 10 adults. A 10 foot by 30 foot lot can hold from 1-20 adults on just one layer 40 on two layers. Or 10-15 adults and with the room at the bottom an additional 1-120 children. That last number being babies. And with double layer 30 adults and 240 babies. Of course this is in physical theory seems impossible but is quite possible. In practice many babies and children were buried at the ends of or on top of an adult burial. The concept of a standard grave size does not fit these old family plots. In a 10 foot by 30 foot at 24 inches 15 adults side by side or with 28 inches width 12.8 adults, with 30 inch width 12 adults and with 36 inches 10 adults side by side with room for children at the end. With a ten foot space there is four feet which means many babies, or several toddlers or a few preteens also would fit in a 10 by 30 lot. Of course we are talking of burials. If there was a family that wanted cremation many many more could be buried or sprinkled on/in that lot. So a 10 by 30 foot lot can have 1-30 adults and 1-240 babies. That are the physical possibilities but what about in practice. Without good records or digging up remains that answer is elusive. It appears most likely that there are probably 10-16 burials in a full 10x30 lot considering several being children or babies. Some lots have less some lots may have more than that. We don't have a way to find. Ground radar may not work on these old graves as caskets and bones dissolve. So you see that just figuring the number of graves is not that simple in an old unplanned cemetery where families could bury in any manner they chose.

What about grave width. Again this is not simple. Child coffins are very small. Standard coffin became 28 inches but families often made their own to fit the person. More children died than adults. Consulting history the standard coffin was only 28 inches wide on outside. Several spacings were computed with results below. Remember families were poor and saved everywhere they could so they could bury in narrow or wider space as they chose. The cemetery property is roughly 533.36 wide by 237.75 feet North but the first 27 rows are only about 166 feet North. The northern strip which is about 60 feet wide and goes full length of cemetery was probably used for stillborns, babies and paupers but is now eroded and wild. At 36 inch width that amounts to 3010 total grave spaces, at 30 inches 3721 grave spaces, at 28 inches 3987 grave spaces and at 24 inches 4651 grave spaces. This is total potential graves on one layer. Now subtract area behind fence if it is determined that it wasn't used, but it was used at least a little because bones have been sighted in the erosion in past. This was a good place for stillborns, day old nameless babies and paupers and by those who wanted to bury someone and not pay for a grave. Oh come on would you want to keep a body in your house. Row 49 would have 95 graves at 30 inch spacing 79 at 36 inch 101 at 28 inch and 118 at 24 inch grave spacing. Row 28 would have 95 graves at 30 inch spacing 79 at 36 inch 101 at 28 inch and 118 at 24 inch grave spacing. Row 27 would have 66 graves at 30 inch spacing 55 at 36 inch 71 at 28 inch and 83 at 24 inch grave spacing. Row 2 would have 57 graves at 30 inch spacing 47 at 36 inch 47 at 28 inch and 74 at 24 inch grave spacing. Row 1 is not counted as it has been intruded upon by West property owner. And what is cemetery property and what was cemetery property is unknown without a survey. The deed states the line is straight but now his land encroaches into the cemetery for his drainage. Now a study of existing lots shows that many graves average about 36 inches but some are less and some are more.

I have chosen in my computations to use 36 inch width figure because I can just list the graves in yards and because I think it fits the thinking of the people and the times. Families could and did

bury closer than that and some farther apart depending on financial needs, weather at burial etc. Charting this out on a map worked fairly well to the 36 inch width.

Now how deep. Even now even states differ Florida minimum is 12 inches but this can be waved by next of kin. Many states use the six foot standard some states are less and private cemeteries also vary. Was that enforced? Well in the 1850s the family itself had to dig the grave or hire someone. If the body had an infectious disease or the family was ill or weak or if the ground was frozen or if it was pouring rain all of that influenced how deep the grave was dug. More than one person including a sexton informed me to be careful in digging around in cemeteries because in a few cases the remains were not far below the surface. Babies and stillborns were often not buried at six feet even today. So to answer the question of how deep are the remains the answer is we don't know and I am not gong to dig to find out. Let them rest in peace. This is why I objected to Warren hysterical society's new rule that all foundations must be 42 inches deep. This could easily put a contractors machine digger into remains. They brushed me off saying suddenly that it would be handled by the committee. What committee? Who appointed them grave police? Who do they think they are to tell a family that they can't put a marker, epitaph or name brick on a family plot that is a hundred years old and have to hire a contractor to dig down 42 inches and aerate the concrete. They are insisting on this but ignore stones seriously tilting that can kill children or hurt people.

On May 24, 1884 the trustees of the Evangelical St Paul's Church purchased the east portion of the cemetery. The name refers to the union of the Methodist and the St Paul's congregations cemetery. A Warren Union Cemetery Association was organized in 1852. The historical marker states it consists of two and one quarter acres. (But it now may be a bit larger than that because the Red Run edge was vacated.)

Various parcels of land were added to the cemetery. In addition the easement of the Government land which runs 160 feet from the center of the Red Run River means that no one can build anything on the north side of the cemetery property. All that is allowed is plants. All and any property which had been owned to the North of the cemetery was either sold to become part of the cemetery or abandoned due to the easement which runs up to the cemetery property. Currently this easement is the River, the embankment, mowed weeds about 40 feed wide and the rest up to the cemetery fence is tree and shrub covered and now eroded with much decaying wood and overgrown. If you want to dispose of a body it is the almost perfect place. At a cemetery, out of sight soft ground possible bodies already there, and easy access.

Researchers who have studied this cemetery and other older Michigan cemeteries have found that there are often many more persons buried than there are stones. Millar Cemetery over on 16 Mile has only 54 head stones yet I have been told there are probably over 100 burials there if not more. At another location Archeologist Scott Akridge was amazed when he visited a local cemetery in 2004. "As many as 200 graves are located here," he said, although only six headstones exist. Most of the 180 cemeteries in the county have numerous graves that are unmarked or marked only with unscribed field stones. Many military veterans lie in these spaces." (<http://www.argenweb.net/white/cems>) And there are thousands of Civil War soldiers in unmarked graves. (I have identified a few that may be in Warren Union Cemetery.) And many thousands more babies and children in unmarked graves around our country. Every one of you have hundreds of relatives in unmarked graves. You doubt me. OK Where are your great great grandparents uncles aunts and cousins buried?

(Just do a Google search on unmarked graves and see for yourself.)

After looking at my research and others research it is discovered that Warren Union Cemetery may have hundreds of more burials than stones now show. **Consider that the original 18-20 families who had lots 10 feet by 30 most did not place stones. That is around 200-400**

burials, of which only just about 50 now have stones. This was not considered at all when the uninformed social club that is called the Warren Historical Society chose words for the plaque.

Also consider that in the early days this cemetery was expanded many times as lots were sold and were used and the area was filled up. Consider again that many additional families bought lots but did not place stones when someone died. And consider that many babies died at birth or shortly thereafter and were buried in the back or on top of other burials. This fact has been totally ignored. Where do they think people buried them if not in this the local cemetery?

And in those days most had big families and they usually filled up their lots and had to buy additional lots here and elsewhere (We have proof of that from several sources. See what Dorothy Cummings stated her family had to buy additional plots to bury family because Warren Union Cemetery was filled up and no plots were any longer available. And her family is one of the ones who had sold property to expand the cemetery and that was soon filled up.

There were many deaths from many diseases we now have cures for which killed many babies, children and adults. Sometimes there were multiple deaths of children in the same family and some died within days of each other and were placed in the same grave. And no marker ever put there.

Remember that there were no funeral homes and that the corpse remained in the family home until burial.

Burial was carried out quickly before WWII. I have diaries from those days that often show a person died and was most often buried the next day. Families did not want a body even of a loved one in the home for long particularly if they had died of an unknown cause. There were fears that what killed the corpse would kill others. Fluids would leak out of the corpse and there were often terrible odors.

Within as little as four hours after death decomposition in different body areas may cause tissue gas to form from the bacteria *Clostridium perfringens*. This is particularly true if a contaminate is present such as vomit, feces, a wound, sores, inflammation, gangrene, etc. The result is a skunk like odor and gasses released. If the house is heated in the winter or if it is summer this is compounded.

Decomposition in a part of a corpse can in just a few hours spread to other parts of the body thru fluids and bacteria in the corpse. And ask anyone who has slept with a corpse in the next room spooky to be sure and terrifying to children and some adults. There were no funeral homes and no refrigeration or embalming. So in the old days corpse was buried sometimes the same day or the next day and as soon as a grave could be dug which was by hand using pick and shovel. Church services were held as soon as possible.

Sometimes in the family members and diggers were weak or due to rain, snow, frost, cold or other problems the grave may not have been dug deeply in the old days before undertakers and machinery. In the old days in rural America, which is what Warren Township was, families buried their own with just a shovel and sometimes with just a shroud. And those who think that every burial was in a six foot deep 3 foot by 6 foot hole should try digging one to understand the magnitude of the work involved in doing that by hand with only a shovel. Even those who have dug a grave for a family dog in the back yard can attest to the work involved. It was many hours of very hard work. Now days grave heaters thaw the ground in the winter and mechanical diggers do the work in a short time regardless of the weather. Pumps can even pump out the water in the hole. When I placed a stone in a family plot on another cemetery the sexton warned me to be careful digging even for a shallow foundation for the stone as he stated he discovered that sometimes old graves were not dug very deep. With the wooden casket rotted away human bones were all that is left and as a hand shovel planted them there a hand shovel sometimes unintentionally disturbs them many years later. In the back bones were discovered but no one bothered to investigate. Quite some time ago a skull was found exposed there. The fact is this cemetery has been neglected, ignored, vandalized, eroded, abused and I can testify that very few people care about it.

Stillborn burials were sometimes placed on top of a prior burial or in a shallower grave.

Remember this was a very rural area and was mostly farmland. The village itself just had a few little shops but they were way East of here. This was surrounded by farmland and trees so anyone could actually come here and bury a body and probably not be questioned. Of course with time as the area farms were sub-divided that changed. But still people have their drunken doings here and as a caretaker for the church I end up picking up their whiskey bottles and condoms. And as crowded as it is now few calls are made to the police. When I called the police from there once no police came and I gave up after an hour. Just a note. I found that a few have been scared off by the dark thing here but I am not about to research that and can't verify it. Myself and others have felt the children here at least by day. I have given night tours to researchers who could not meet me during the day, can't say we saw anything unusual, but we felt sort of a creepy presence. Perhaps it was within us from seeing too many horror movies. Don't know. There are other reports from others of seeing things there but how much is fact and how much is imagination is very uncertain so unless I see proof or multiple reports of the same thing by multiple persons I treat them as fiction.

Also consider that many perhaps hundreds stillborns and newborns graves were and are even today **rarely marked**. Many were **buried on top of regular already used lots**. Very few of these were noted on any existing grave stone. Even now many families have baby graves without markers. Consider that **the older graves were most often not marked by stones at all** and that **the older part of the cemetery was considered full by 1945** and many families had to buy lots elsewhere. Consider that **there are 2600-3000 grave spaces** (depending on grave width and other considerations explained further down) inside the currently fenced area even after subtracting aisles and that there is considerable more cemetery property outside of the current fence at the back. (room for 500-1000 burials considering that many would be stillborns or babies.)

Consider that the "back" of the cemetery where many babies & paupers and possible secretives were buried extended much further than the now fenced in area and was partly changed by the 1950s Red Run project and by erosion since. The fence was erected in 1986. Before that anyone could bury, in reality, wherever they pleased when no one was around. There were many shrubs and trees in the back and it was probably possible to bury without being noticed. A small wagon could be pulled out of sight at the back. Recall this was a rural area until WWII.

Families who suffered stillborn or baby deaths did not usually want a big funeral or a stone as there was a stigma about this. The family home served as the funeral home and most families just buried the remains in the cemetery quickly and privately and did not want a marker to remind them of a stillborn or sickly often unnamed baby which would prolong the sorrow of the already guilt ridden grief stricken mother.

The sister cemetery St Clement with good records shows 1.5-2 children buried for each adult with only about 6% of child deaths registered at the county. Using that rate suggests the **possibility that there could be as many as 1500 babies and children buried there. County Death records for Warren indicate 50% of the recorded deaths were children prior to WWI but when you add in the non registered ones you get the 1.5 – 2 figure which translates into 100-200%. Remember more children than adults died in the old days and many did not make it to age 21.**

Add another possibly few hundred or so adults without markers and you have the cemetery up to capacity. As we have been told by the oldsters many times that the cemetery is full. The above makes mathematical sense. But no one alive now knows for sure. Additional collection of family records will give us just a few. Also the infant mortality rate back then was very high approximately 200 per 1000 per annum.

Many other old cemeteries have hundreds of now unmarked graves many of which are children. Figure of the 1000 burials in Warren Union Cemetery only 150 show children when county death records of Warren show there are 500 child deaths per 1000 registered deaths average. That shows many unmarked plus when one considers that **less than 6% were even registered** and considering the actual rate per the sister cemetery which is much higher, and also considering the mortality rate there are hundreds of additional unmarked burials.

Researchers have done the math of all of the above and say that there is high probability that hundreds of children and many adults are buried in Warren Union Cemetery without markers.

We should at least recognize the possibility of this.

In fact it is much more likely that there are as many unmarked graves as now marked graves.

This is true of many older cemeteries. Remember this is not a commercial cemetery like Forest lawn or Detroit Memorial where records have been maintained and burial practices standardized.

There were certain families who lived in the area of this local cemetery many of which attended the local churches in the immediate area. The few that were catholic were usually buried at St Clement. But the rest who were Baptist, Methodist, Attended St Paul or were non church goers were most likely to be buried in Warren Union Cemetery. The reason was it was close and the churches were here and it was the custom. When this cemetery started to get filled up, then people sought graves elsewhere. But that was sometime probably near the end of the 1930s. Here below are the family names of very local families who for the most part lived nearby with the high probability of having babies, children (more children died than adults) and adult family members buried in Warren Union Cemetery without markers.

This is a tentative list as I am working on this study part time. Bold indicates a person with that family name buried in Warren Union Cemetery. Remember many of these early families did not place an engraved marker. Many of these has stillborns infants and children die and did not place a marker on their grave. It is likely that many of these families have at least a child buried in Warren Union Cemetery.

ABELAN	BIGFIDEL	BRUCE	COOK	DWIRE	GLASIER
ADAMS	BINDICK	BUCKLEY	COOLEY	EBERT	GLASS
ADAMS	BIRD	BUNSN	COREY	ELDESN	GLAZIER
ALBRIGHT	BITTNER	BURDICK	CORNELIER	ELISULE	GONYE
ALDRICH	BLACKETT	BURT	CORY	ELLIS	GOOD
AMES	BLUM	BUSH	COST	FARNEY	GRAFT
AUSLEMANN	BLUNT	CAMP	CRAMER	FARSTER	GRATTUP
AYRES	BLUNT	CARDORIR	CRAULY	FAUMAU	GRAUPOOIL
BAKER	BOLAM	CARTWRIGHT	CROWLEY	FINCH	GRAVES
BANGHART	BOLAND	CASBORN	CUMMINGS	FINK	GRAY
BARR	BOLEM	CASE	DANIELS	FOX	GREEN
BARTON	BONKMAN	CHAPMAN	DAVIE	FREEHAND	GRIFFIN
BEAUFIT	BOOART	CLARK	DAVY	FRIDENHOFF	GROESBECK
BECK	BOURKE	CLEMAN	DEBROUR	FRINK	HAGAN
BEEBE	BOWDEN	CLINKHAMMER	DECONING	FRODA	HAIGHT
BEECH	BOWEN	CLOUCKER	DEISLER	FROST	HALL
BERNARD	BOWER	COLTS	DELLER	GAY	HALMAH
BESAN	BRADSHAW	COLWERG	DENISON	GEORGE	HALSEY
BETTON	BREMER	CONDO	DENNISON	GIBBS	HALWICK
BEZOYER	BRINKMAN	CONERFORD	DIRGEL	GILLETT	HALZ
BICKFIELD	BROWN	CONNOR	DUBU	GLANKY	HAMLIN

HANTZ	JONES	MCREYNOLDS	PETERS	SEEGLEY	THIM
HAPET	JUTTLETEN	MEEK	PLUNKETT	SELLECK	TICE
HARTLINE	KAAS	MELBURG	POSTE	SHAFT	TILL
HARTSICK	KALES	MESSMORE	PREICE	SHEGNIN	TIPLE
HARTSIG	KALTZ	METRE	PRIEST	SHOESTER	TORRY
HARTWELL	KEISER	MEYER	RAILER	SHONESS	TROMBLEY
HARWOOD	KEMCHE	MICHALS	RAYMOND	SHONGLOTE	TURNEN
HATMAN	KEYLER	MIDDLETON	REED	SHOUTER	TYSON
HEARTMAN	KING	MILES	REMMINGTON	SHOVER	UTARIUS
HELDEBRAND	KINGLSCOTT	MILLER	RENDEL	SHOWER	VALENTINE
HELM	KINSER	MILLIN	RESVOR	SHRIVNER	VAN ANTWORP
HIMAN	KISON	MINNS	REUBEN	SHULTZ	VANANTWER
HINDS	KLINE	MOLAN	REWOR	SHUSTER	VANAUTUERP
HINES	KLUGO	MONIO	RHEUL	SINGER	VANDERHOOP
HINMAN	KREMER	MOORE	RICKEBOOS	SIVELINE	VANFLEET
HISNER	KRUGER	MOREHEAD	RICKEBUP	SKEPRA	VERK
HITCHCOCK	LADUKE	MORRIS	RICKELUS	SKINNER	VESHAVER
HOFFMAN	LAFFIRTY	MORSIS	RICKERT	SLAKER	WADE
HOGAN	LAKIN	MOTIER	RIELEN	SMIDT	WALKER
HOLBROOK	LAMB	MUMRO	RINGHART	SMITH	WALLBURG
HOLDER	LAZER	MUNRO	RINGSCOTT	SMITZ	WARD
HOOFHOPPE	LEARS	MURPHEULS	ROAT	SNOBLIN	WARDHOFF
HOOPMAN	LELURIN	MURRAY	ROBINSON	SNOUBLIN	WARNER
HORTON	LENGH	MURRY	RODY	SOCKS	WARREN
HOSS	LEROY	MYRES	ROLAND	SPINNINGS	WEAVER
HOUGH	LETTERUN	NAGABOWER	ROOD	SPIRE	WELCH
HOWARD	LINTO	NAMMUL	ROSE	SPURINGER	WELSH
HOYT	LINTZ	NAPOLRAN	ROTARIUS	STAGER	WHALEN
HUBBARD	LONG	NEWLAND	ROTARIUS	STANLEY	WHALING
INKLEMAN	LONY	NEWMAN	ROYCE	STANZER	WHELAN
ISEMEN	LYONS	NOLAN	RUBING	STASMEN	WHITE
JACKSON	LYSON	NUMETH	RUSH	STEPHENS	WILLS
JACOB	MAKER	O'DANIELS	RYAN	STOUT	WILLSON
JAMES	MANDUN	O'PHOCUE	SAC	STRIKER	WILSON
JANKE	MARTIN	OCONNEL	SADLER	STRONG	WINDOTZ
JASPER	MASON	ODONNELL	SADUKE	STUART	WINTER
JENNEY	MCCARTY	PARISH	SCANZE	SULLIVAN	WISNER
JENNY	MCCOY	PATTEN	SCHEM	SWIVELINE	WOLF
JEROME	MCDOWELL	PAYNE	SCHERBE	TAYLOR	WORMSPIKES
JESTER	MCFALL	PEARSAL	SCHMIDS	TEHEU	WRIGHT
JOHNSON	MCGAFFRY	PEARSALL	SCOTT	TETES	YEPS
JOLVIN	MCGRATH	PERTZ	SCRATCH	THARRETT	
			SEAL		

Additional Family Records

This space reserved for additional family records regarding

Warren Union Cemetery

This is important because no other records have been found.

Study of Warren Union Cemetery number of children

Of 150 stones showing children's names only about 12 were recorded were recorded in Macomb County records for Warren township. But the stillborns and day old babies were mostly not recorded at all. They were just buried quietly on family plots or in the back of the cemetery.

1-2 Remington George D Jun 5, 1880 Apr 16, 1918*

1-3 Remington Catherine Nov 1, 1882 Dec 5, 1936*

1-11 Langel Arthur Joseph Oct 4, 1904 Nov 21, 1923*

1-12 Langel Warren J 1912 1933

1-13 Langel Monument gray by fence

1-14 Langel Joseph M 1877 1945*

1-15 Langel Cordelia M 1876 1948*

unmarked grave

1-17 Langell corner marker

Totals: probable persons based on stones 6 ; total graves 48 ; total unmarked graves 41

2-6 Berger Nicholas 1836 1920*

2-1 Berger Johanna 1840 1899*

2-7 head stone FATHER

2-8 head stone MOTHER

recorded 1893

Child 2-9 head stone BABY PROBABLY R2 Berger Esmelia female 3m 1893
Summer Complaint

2-16 foot stone

2-17 foot stone

2-18 flat stone face down

2-19 Gesch Monument lists Lottie & Ferdinand

Gesch Lottie nee Gesch Jul 23, 1874 Oct 8, 1902 father Ferdinand Gesch* Mar 1842 Jul 1879

2-22 unreadable

Gesch mother b 1874 d 1902

Gesch Emilie*

Gesch Martha*

Gesch Ferdinand Gesch 1842 1879*

stone face down

2-27 BIG STONE Metro Monument now face down listed Phebe Stella, Geo, Richard

no record

Child Metro Phebe 1869-
STONE FACE DOWN

no record

Child Metro Geo 1867 1920*

no record

Child Metro Stella 1893 1895*

no record

Child Metro Richard 1891 1892*

Metro, Frank b Warren d Jul 24, 1898 ag1-10-13 son of Jos Metro of Warren and Agnes Giddly, Detroit.
MISSING MARKER

Totals: probable persons based on stones 15 ; total graves 48 ; total unmarked graves 33

Row 3 from W. Landmark is Reddick big gray stone (Skinner on back) 4 yards from fence

3-4 Reddick-skinner monument

Reddick Tom 1865 1940*

Reddick Emma B 1865 1948*

Reddick Melvin A 1904 1951*
other side Skinner Monument listed are Alonzo, Electa, Id J

other side Skinner-Reddick Alonzo May 21, 1826 Sep 6, 1898*

Skinner-Reddick Electa J 1837 1910*
Skinner-Reddick Ida dau of A & EJ Skinner Oct 23, 1879 ag 20 yrs 4 mos*

3-7 base monument gone ond monument had inscription "We miss thee, yes, no tongue can tell, How much we loved thee, nor how well"

Mother

unreadable

unreadable

several unmarked graves

3-15 Mother

3-16 Father ur

3-17 Crawford-Tanner monument

Tanner Ida A Apr 23, 1871 d Jan 15, 1896 dau of David & Alice Wilson*
"Half blown the rose, half withered and died. Sweet perfume lingers around us still, and Mid the thorns at its faced side, But one bud remainsto fill the place now left."

{Tanner Ida d Jan 15, 1896 marr 25 bright diseaserec 271 }

Crawford J M Nov 30 1824 Jan 31, 1912*

Crawford Elizabeth wife of J M Crawford Oct 8, 1830 Jan 12, 1908*

no record

Child Crawford had six small stones Mother Father, Ida, baby Emma One stone had lodge marker FGB and R N A*

3-19 FATHER

3-25 Giff Effenie d Jun 15, 1888 ag 70 yr 2 mo 15ds plus four graves Father, small stone E Giff

no record

Child Giff Thistherod William 1881

"Jesus, while our hearts are bleeding, O'er the spoils that death has won, We would at this solemn meeting, calmly say "Thy will be done, Though cast down, we are not forsaken, Though afflicted not alone, Thou didst give and now has taken, Blessed lord, Thy will be done."

3-29 Distrod monument east

no record

Child 3-29 west Thistherod William Dec 28, 1881 ag 4 1m 5d white stone presented from Grandpa Giff*

Diselrod Lambert Feb 2, 1844 Apr 7, 1892 ag 48 2mo 5d*

3-29 Diselrod Effie 1873 1944

Distelrath Lydia 1885 1923

unmarked grave

no record

Child Note another Lambert Diselrod b Mi d Apr 1, 1900 age 1-3-0 son of John G Diselrod & Minnie Wilson of MI is buried in an unmarked grave here at the Warren Union Cemetery
DISELROD D1900

Totals: probable persons based on stones 25; total graves 48; total unmarked graves 23
Row 4 from W. Landmark is John Gamble tall old gray stone

4-5 Gamble monument

Gamble John d Feb 5, 1895 ag 62 7mo * "At Rest"

no record

Child Gamble Infant children of J & I Gamble, had small stone father*
several unmarked graves

4-8 Gillett James H 1859 1907

Gillett Emma E 1863-1950 unmarked is a stone face down

unmarked grave

4-13 Walker Louis C 1869 May 7, 1898 ag 22-10-11 son of B Walker & Mary Hoyt single laborer*

4-14 Walker George B 1837 1914*

4-15 Walker Mary J 1843 1924*
unmarked grave

4-16 Halsey C Frank 1860 1938*

4-18 Halsey Edith M 1865 1938*
stone under ground

4-20 La Croix Julie 1888 1938*

no record **Child** 4-21 La Croix Edith Anna 1905 1917*

4-24 square corner stones Kircher

4-26 Gotlieb Kirchner red stone

4-25 flat face down no words

4-27 Kirchner Gottlob Father 1852 1927 tall gray*
Kirchner Marie Justine wife of Theo Kirchner Feb 25, 1824 Sep 6 1885*

4-28 Distelrath Lydia E 1885 1923

4-29 Distelrath Lambert H 1886 1929

4-30 Distelrath monument only one side has words
Distelrath Kirchner Lydia E 1885 1923 "Mother"*
had two foot stone marked Mother 2 graves had IOOF emblem
unmarked grave
fence 33.5 yards

Totals: probable persons based on stones 17; total graves 48; total unmarked graves 31
Row 5 from W. Landmark is Cole tall gray granite 7 yards from S fence

5-4 head stone FATHER had IOOF emblem

5-6 head stone MOTHER

5-7 Cole monument tall gray
Cole Wm 1848 1908?
Cole Wm L b1840 d no year on stone*
Cole Viola C his wife 1845 1909*
Cole Elvin ag 3 1867 1870*

no record **Child** Cole Clara R May 9, 1869 Jun 3, 1884 *
5-9 foot stone Clara
there are several unmarked graves here

5-24 corner stone

5-25 Tatro Francis 1843 1885 low stone

5-26 Schuster Loretta nee Tatro 1846 1931*

5-27 Tatro monument Francis Tatro d Oct 19, 1883 ag 39 10mo

5-28 Harwood Ahas 1790 Dec 10, 1867 ag 78*

5-29 Tatro Francis 1843 d1883 ag39*

no record **Child** Harwood Minard 1851 1926*

no record **Child** Harwood Daisy B 1876*

Totals: probable persons based on stones 11 ; total graves 48; total unmarked graves 37
Row 6 from W. Landmark is Halsey low gray granite medium size tree 2 yards from S fence
Halsey Hiram 1852 1933*

6-2 Halsey Hiram C 1832 1933

6-3 Halsey Edith A 1858 1946*
at least ten unmarked graves

6-12 foot stone

not recorded **Child** 6-13 Elvin

6-14 Hoard monument words on 3 sides tall

Hoard Levi Jun 24, 1807 Jan 20, 1888*
 Hoard Lucina wife of Levi Hoard Sep 7, 1807 Oct 28, 1886 *
 Hoard G W Aug 1, 1878 Nov 1910 on Hoard monument*
 not recorded **Child** Hoard Elizabeth Sep 12, 1885 Jun 1, 1901 on Hoard monument co record shows
 dau of John Tharrett & Maria Tyson of Eng. Married*
 Walker Gusta B wife of C E Walker Mar 16, 1872 Jun 18, 1900 on Hoard
 monument* and co records ag 29-3-2 dau of Hoard b Mi, & Elizabeth Tharrett or NY state. Married.
 not recorded **Child** Walker Lewis C b May 18, 1900 d Jun 27, 1901 on Hoard monument ag 1-1-9
 son of Chas Walker & Gusta Hoard Mi*
 6-16 PA
 6-17 unreadable and Hoard small stones mother father pa ma Mama*
 6-20 Osborne Maria 1860 1925*
 6-21 Osborne Clinton E 1855 1902*
 not recorded **Child** Near Osborne small marker Clifton*
 6-24 Wilson William 1818 1904* {Wilson William 22 marr 85 6 21 senile-- b
 Canada farmer John Wilson unk}
 6-25 Wilson Margaret 1835 1917*
 6-27 Wilson John H 1859 1934*
 6-29 Wilson Lizzie 1863 1951*
 6-30 Wilson Mary 1866 1931* Warren township record d Apr 12, 1931 ag 35-1-2
 dau of Henry Jessop & Elizabeth White of England. Wife Thomas T Wilson.
 6-32 Wilson Thos T 1868 1934*
 Totals: probable persons based on stones 20; total graves 48; total unmarked graves 28
 Row 7 from W. Landmark is Evarts low standing light gray about 2 yards from fence
 7-2 Evarts Wallace Oct 26, 1885 ag 76 yrs* leaning not bad
 7-3 Evarts Permaniah Peninh wife of Wallace O Jun 18, 1808 Nov 14, 1900
 footstone mother*
 {Evarts Permaniah 1890 Nov 14 ag 82 widow Paralysis rec 237}
 7-4 Evarts Alison A May 27, 1886 ag 38 yrs 3 mos* "Farewell Friend"
 in this space are four unmarked graves
 had foot stone Alison
 7-9 Hoxsey James son of E Hoxsey Aug 27, 1854 Mar 22, 1887*
 7-9 head stone FATHER
 7-14 head stone
child/ Hoxsey Thos son of James no date * could be child
 Hoxsey James died of consumption
 4 graves clearly outlined on Hoxsey lot
 two unmarked graves
 7-15 Pereira monument big gray monument
 Pereira M J Jan 20, 1843 May 2, 1919*
 Pereira Cordelia his wife MJ Dec 18, 1843 Dec 2, 1899 *
 Pereira Frank A Apr 20, 1884 Jun 20, 1928*
 not recorded **Child** Pereira Arthur L Mar 4, 1906 Jan 20, 1914 *
 had stones Mother, IOOF, K of C
 unmarked grave
 7-18 Pearsall Monument BIG
 Pearsall Ira C Nov 3, 1891 ag 56 yrs 10 mo 26 days* is only name on monument
 foot stone W P, Father
 7-20 unreadable tall marker
 not recorded **Child** William son of Iria and Anna Pearsall d Sep 9, 1876 ag 2 yrs 1 mo*
 there are about 10 unmarked graves

four corner markers
7-25 Peck Monument big gray no names
7-26 Buckley John L *1890 May 12 ag 33 married farmer b MI John & Margaret
of Warren Drowned Macomb County Record 239 per Wes Arnold historian
7-27 Buckley Sarah aunt* {Buckley Sarah A 1889 Mar 8 widow ag 73 record
No 254 cancer in chest b NY }
7-28 Peck Celia J wife 1853 1927*
recorded 1892 **Child** 7-29 Peck Roy E 1881 1902*
not recorded **Child** 7-30 Peck Harold E 1888 1902*
7-31 Peck Martha R wife 1860 1878*
7-32 Peck Edward H 1857 1941*
7-33 Peck May V 1885 1980*

Totals: probable persons based on stones 22; total graves 49; total unmarked graves 27
Row 8 from W. Landmark is Tharrett Monument Big BIG gray 5 yards from fence
8-2 unreadable
8-3 stone unreadable
8-4 stone unreadable \
8-3 Tharrett Robert Jan 29, 1837 Sep 5, 1906 BIG* + foot stone FATHER
{Tharret Robert Sep 3 1906 marr 69 8 3 cause ?cranatatic Insufficiency b MI farmer John/Maria}
8-4 Tharrett Diana wife of Robert Sep 21, 1843 Nov 3, 1912* + foot stone MOTHER
8-5 Tharrett Monument big tall
not recorded **Child** 8-7 Tharrett Julia dau of R & D d Apr 17, 1874 ag 1yr 28 ds*
5 ft stones unreadable , Mother Father
from here to VanFleet are 12 unmarked graves or unused
8-15 VanFleet monument tall VanFleet Frederick d Sep 27, 1888 ag 73* not
recorded **Child** VanFleet Judiah H Mar 21, 1846 May 27, 1864 ag 18
not recorded **Child** VanFleet Frankey Oct 15, 1861 Oct 4, 1863* just under 2 years
VanFleet Theodore F Jun 23, 1842 Sep 18, 1864 ag22
8-16 4 lot corners T
8-16 Theodore also had stones, Judiah, Frankey
8-16 MOTHER
Edna L 1873 1931
8-17 LaDoucour monument no words BIG BIG
8-19 LaDoucour Edna L Mother 1873 1931*
8-20 LaDoucour Dr Edward W Father 1869 1927* Twp record b Blissfield,
Lenawee Co Mi Aug 13, 1868 d Warren Jul 16, 1927 Wife Edna. Son of Joseph of Canada. Was M.D.
In Warren Had son Harold who m Carrie and had children F C
not recorded **Child** 8-21 LaDoucour Ralph E 1918 1924*
8-24 STONE BENCH
8-31 Brandon Hazel 1886 1948*
8-32 Brandon Daniel S 1883 1953*

Totals: probable persons based on stones 16; total graves 49; total unmarked graves 33
Row 9 from W. Landmark is Cartwright worn white sandstone about 2 yards from fence
not recorded **Child** 9-2 John F son of F W & E d Feb 19, 1869 Cartwright ag 2yrs 4 mos 24 ds
9-2 foot stone J F C
9-4 Murthum monument tall gray worn
not recorded **Child** Murthum Minnie A Apr 22, 1884 ag 19 & 1 day*
“A loved one has gone from our circle On Earth we will meet her no more, She has gone
to her home in heaven, And all her afflictions are o'er.
unmarked grave William Murthum
Had Addl stones Freddie, Minnie A

9-6 Cartwright BIG DARK GRAY MONUMENT

Cartwright Frederick W 1843 1911*

Emma Cartwright 1844 1938

9-8 head stone Emma Cartwright Emma wife of Frederick 1844 1938*

9-9 head stone Frederich

9-13 Tharrett John d Apr 22, 1876 ag77 3ms*

“affliction sore I long have bore Physician skill were vain, till Christ the chief, he brought relief, and eased me from my pain

9-14 Tharrett Maria d Aug 7, 1889 ag 80 7ms 3 ds* widow ag 82 record 282 b England Pralysis of Heart Macomb County Record

“Mother, you have gone and left us and we miss you in our house, But we hope again to meet you, where no parting will be known.”

9- J & M and had stone MT

not recorded **Child** 9-13 Tharrett Theadore son of J & M d Jul 27, 1860 ag 11 yrs 4 mo 19 ds *

not recorded **Child** 9-14 five stones unreadable ??lett ? W 1835 aged 2 yrs worn needs careful read child stone unreadable

9-17 Big Tharrett monument grey

Tharrett Willie R son of A & E d sep 17, 1885 ag2 3 ds* “Good Bye”

recorded1885 **Child** Tharrett Willie R 1883 Sep 17, 1885 ag 2 yrs 3 ds*

Tharrett Alonzo 1845 1903*

Tharrett Ella 1849 1929* township record b Norwalk, Conn Apr 11, 1840 Sep 21

1929 dau of James M Hoit & ? of Conn wife of Alonzo Tharrett

9-17 Theodore, son of J & M Tharrett d Jul 27, 1860 ag 11 yrs 4 ms 19 ds.

9-20 Smith George A 1845 1923*

9-21 Smith Dora 1859 1895* {SmithDoraJune 27 1896 fe marr 35 tumer b Canada rec 273} this area has 6 unmarked graves

9-28 Hearn Sarah 1849 1929*

9-27 Hearn Robert 1851 1927*

three unmarked graves

had Hearn corners

Totals: probable persons based on stones 18; total graves 49; total unmarked graves 31

Row 10 from W. Landmark is Smith BIG big gray about 4 yards from fence

10-2 foot “PAPA”

10-4 Smith big gray monument

Smith W H MD Oct 4, 1856 Dec 26, 1899*

had stones Papa, lodge marker FGB

unmarked grave with lodge marker RNA

10-6 Hoxsey Bertha M 1872 1923

umarked grave

10-7 big gray monument Halsey

Halsey Nathan W Oct 3, 1826 Jan 27, 1910* head stone FATHER

Halsey Harriett E Mar 3, 1838 Feb 12, 1908 on Nathan stone*

10-8 MOTHER

10-9 FATHER

Totals: probable persons based on stones 4; total graves 50; total unmarked graves 46

11-3 Harwood new BIG gray monument

Elizabeth b 1837 d 1925 wife of

unmarked grave of Arnold Harwood Aug 25, 1816 May 21, 1914

11-6 unreadable

11-6 Old Harwood monument

Harwood Children of A* E G Harwood all on tall monument* **several children** died not recorded

recorded 1884 **Child** Harwood Alma E d Jul 11, 1882 ag 18yrs 7ms 23ds *

no record **Child** Harwood Byron E d Aug 14, 1884 ag 17ys 11 mo 23ds*

Child Harwood Elmer d Dec 9, 1861 ag 6mo*

Harwood Elizabeth 1837 1925*

Harwood Elvira wife of A Harwood d Nov 13, 1858 ag 36yrs 9ms*

11-6 Alma,
11-6 Byron
11-7 Evira

no record **Child** 11-7 Harwood Elmira d Sep 22, 1851 ag 2yrs 4ms 21ds dau of A & E G Harwood* 11-9 Elmer

11-10 8 foot stones unreadable

not recorded **Child** 11-14 Hoxsey Almada dau of Edward and Margaret Jun 15, 1851 Dec 17, 1856 ag 5 ys 6ms 8ds* has foot stone MH

11-16 Hoxsey tall big monument

Hoxsey Edward Jul 26, 1827 May 6, 1896* + foot stone
{Hoxey Edward May 7 1896 marr 68 Cancer of Stomach b MI farmer rec 289 }

Hoxsey Margeret d Jul 25, 1884 wife of Edward ag 50yrs 8mo 23d*

11-16 foot stone Margaret
11-16 stone laying on face can't read
two corner stones unreadable
five unmarked graves

11-20 Hoxsey Catherine wife of George d Dec 21, 1875 ag 83 foot stone Catherine foot stone E G

11-21 Hoxsey George d Apr 12, 1867 ag 67yrs 4 mo 7 ds*
five unmarked graves

11-27 Gillett Peter died May 13, 1862 age 73* west side had foot stone PG

11-27 Sylvester Royce stone on east side

11-29 Gillett Sally wife of Peter Gillett d Apr 16, 1851 age 60 yrs* had foot stone SG

11-30 Gillett Mary dau of P & S d Feb 28, 1863 ag 39 yrs 4mos 21ds*
lot had Gillett stones Mother, Father, George*

11-31 head stone George

Jame wife of Fredrick banks d Sep 4, 1874 ag 74 stone broken on ground foot stone JB

11-32 head stone unreadable

11-33 Gillett monument tall
Gillett monument tall shows Gillett William Nov 20, 1813 May 25, 1894*

Gillett Jane Jan 11, 1817 May 17, 1897 on Wm monument*

Totals: probable persons based on stones 18; total graves 50; total unmarked graves 32

12-5 foot stone unreadable

12-6 foot stone unreadable

12-7 Barton monument tall pink monument

Barton Oliver Jan 31, 1822 Mar 15, 1897*

Barton Frances M wife of Oliver born Apr 13, 1826*
also lists John and Chloe

Barton Chloe d May 16, 1850 ag 69 yrs

John H Barton d Dec 5, 1856 ag 76 yrs
had stones MOTHER, FATHER JHB, OB foot stone JHB

SIX unmarked graves

12-13 Davy Isaiah May 4, 1822 May 31, 1891*

not recorded **Child** 12-16 Davy Willie R son of Isaiah & Sophronia d Mar 13, 1855 ag 5 ys 9ms 18ds*

not recorded **Child** 12-16 Davy Izora A dau of Isaiah & Sophronia d Mar 3, 1855 ag 3 ys 7ms 6ds*

not recorded **Child** 12-17 Denizon James Orison son of Avery and Mary d Mar 18,1842 ag 20 ys2m*
unmarked grave

not recorded **Child** 12-19 Denison David A W son of David T and Augusta A ag7 mo*
unmarked grave

not recorded **Child** 12-20 Denison David son of Avery & Merck Denison
Denison David son of David and Mercy L djUL 26 1853 ag27 9 6*
“His dying words “Farwell dear friends, I leave you here, With her to me who is most dear, For health decline and I must die and go to Mansions in the sky, I leave you in the hands of God, who purchased you with His own Blood, Though I must bid you all goodbye, I hope to meet you in the sky.”

12-21 Denison Elsey Hough wife of D A d Oct 23, 1840 ag 24 5ms 1 dy*
“Farewell my dear husband, the Lord bide me come, Farewell my dear sistersI am now going home .
Bright angels are whispering, so sweet in my ear, away to my Saviour, my spirit shall steer. I am going,
I am going, but what do I see, 'Tis Jesus in glory appears unto me, To Heaven, to Heaven, I am going,
I'm gone, All glory, Oh Glory, 'tis finished, 'tis done.”

six unmarked graves

12-27 Royce Sylvester W d Jul 12, 1862 ag 47ys 7ms + foot stone

five unmarked graves

12-27 Mary J Royce d Dec 12, 1867 ag 48y 11m 6ds had foot stone Our Mother

two unmarked graves

12-29 Wood Sylvia A Nov 10, 1838 Sep 3, 1880 on the Mary Barr stone*

and **daughter** Mary A Barr Oct 23, 1860 Jun 9, 1881 only 19 ys old

12-31 Walker Archie Hoyt 1891 1911*

12-32 Walker Burrett 1889 1920*

12-33 Walker Burrett Sr 1866 1936

12-34 Walker Etta 1870-1948

unmarked grave

Totals: probable persons based on stones 18; total graves 50; total unmarked graves 32

Row 13 from W. Landmark is Ames BIG BIG GRAY STONE

not recorded **Child** 13-3 Ames Elton M Jun 9, 1867 Nov 5, 1867*

13-4 Ames big gray stone

13-5 Van Antwerp Sarah wife of Wm d 1867 ag 75y flat on ground + footstone S A*
Van Antwerp Brother* unmarked grave

13-6 Ames Milo Aug 4, 1840 Dec 7, 1920*

13-7 Ames Cordelia W May 5, 1842 Jun 2, 1916*
Ames Polly wife of Smith Ames 1855 ag 48y by M Ames*
Ames Smith husband of Polly d 1858 ag 51y by M Ames*

Ames, Polly wife of Smith Ames d feb 15, 1855 ag 48y 5m 12d stone Polly by M Ames
Ames Smith husband of Polly died Feb 3, 1859 aged 51y 4m 27d by M Ames

13-9 flat face down needs careful read unmarked grave

13-9 foot stone unreadable

13-10 Van Antwerp Dan'l eldest son of Wm & Sarah d Mar 8, 1859 ag 47y 4m 16d*
Sarah wife of William d Sep 4, 1867 ag 75 7m 4d foot stone SA stone flat near front fence
A light from our household is gone, a voice that we loved is stilled,a vacant place is in
our house, that never can be filled. “Brother in the solemn trust, we comment thee dust to dust, in that
faith we wait til risen, Thou shalt meet us all in heaven.” five unmarked graves

13-19 Norris John N*May 18, 1824 -1891 Aug 9 widower 67 blood poison b NY farmer
Macomb County rec 225
Norris Amanda May 27, 1821 Jan 4, 1890 on John Norris stone*
four unmarked graves

not recorded **Child** 13-17 Brown Lydia Barclay d Sep 9,1864 ag 19y 7m 19d*

Friends are passing over. Also had foot stone LBB
 13-18 Brown Amanda Hall wife of N Hollister d Oct 23, 1876 ag 61-2-4*stone
 broken on ground had foot stone AHB
 possible unmarked grave N Hollister
 eight unmarked graves
 13-26 Ames Franklin Dec 6, 1803 Feb 22, 1880*
 possible unmarked grave wife of Franklin Ames
 eight unmarked graves
 13-33 Morehead Charles Adair Sep 16, 1865 ag24* inscription
 Totals: probable persons based on stones 15; total graves 50; total unmarked graves 35
 Row 14 from W. Landmark is Barr tall white stone 4 yards from fence
 14-4 Barr Margaret wife of R C Barr d Feb 6, 1884 ag78y* NEEDS CALKING
 two unmarked graves
 not recorded **Child** 14-7 Barr Orlando D son of D C and P O Barr d Sep 15, 1863 ag1-9-28* had foot
 stone ODB
 ten unmarked graves
 14-7 foot stone unreadable
 not recorded **Child** 14-8 Barr Mary A dau of RC & M Barr d Nov 8, 1850 ag 1y-6m-13d*
 14-8 Barr Mary S 1860 1881*SEE 12-29 "A mother and a wife most dear A
 faithful friend lies buried here" She was an affectionate wife and mother, a dutiful daughter and good
 sister. Her loss is deeply felt by all
 not recorded **Child** Barr Nancy E dau of R. C & M Jan 17, 1846 ag2 8ds* on tall monument
 14-9 Barr Reuben C d Jan 7, 1873 aged 70y 10m*
 Go Home dear friend, Wipe off your tears, Here I must lie, Till Christ appears.
 Seven unmarked graves
 recorded 1873 **Child** 14-14 Minns Robert Osborn son of Phillip and Mary Jane Aug 10, 1868
 Jan 31, 1873 ag4y 5m 21d had foot stone RGM* [Minns Robert Osborn 31 1873 4y 5m cont cough]
 14-15 Minns Philip d Nov 25, 1889 ag74y 3m 14d* unmarked grave
 recorded 1872 **Child** 14-16 Minns Elisha W son of P & M J Minns d Aug 26, 1872 ag 2 mo 15 ds*
 [Minns Elisha O aug 26 1872 2m Scarlet Fever]
 14-16 Minns Mary Jane wife of Philip dau of E W & M Halsey d Jun 8, 1872 ag42*
 She was an affectionate wife and mother, a dutiful daughter and good sister. Her
 loss is deeply felt by all. Foot stone MJM
 14-18 Halsey Mary Jane wife of Philip Minns dau of E W & M Halsey d Jun 18,
 1872 ag42 1 m 26d *
 14-18 Elisha W Halsey d Aug 7, 1874 ag 88y 7m 9d also stones MOTHER, FATHER
 possible [Halsey Elisah d1891 Aug 3 male 81 married old age b NY Farmer
 Macomb County rec 234]
 not recorded **Child** N H Lauria b Mar 4, 1874 d Jan 23, 1878 ag 3ys 8 mos 19ds had stone NHL
 not recorded **Child** M E Lauria b Mar 17, 1877 d aug 24, 1877 ag 5 mo 7ds had stone MEL
 three unmarked graves
 not recorded **Child** 14-22 Halsey Charley C son of N W and H E Halsey d Dec 8, 1859 ag 3ys 26ds*
 six unmarked graves
 14-26 Cole Marilla wife of Moses Cole d May 11, 1864 ag 25ys 6mos 16ds had head stone
 unmarked grave Moses Cole and another unmarked grave
 14-27 Smith Harriet wife of Robert D d Feb 5, 1860 ag 51 8m 16d*
 unmarked grave
 14-28 Smith John B son of R D & H d Sep 7, 1858 ag 26 5m 13d had stone JBS*
 not recorded **Child** 14-29 Gamble John son of B G d Aug 6, 1869 ag 3mo 2ds*
 14-30 head stone
 unmarked grave

unmarked grave had marker "Evelyn"

14-33 Smith Robert D Jan 11, 1803 Jan 10, 1889 ag 86*

[MCDR Smith Robert D Jan 18 1888 86 md paralysis]

14-34 Smith Esther G Apr 14, 1811 Sep 23, 1899 had stones Mother & corner stones S*
foot stone

Spalding lot had 4 corners marked S

14-35 west Gamble Benjamin G 1843 1900 big gray stone

old record Gamble stated Benjamin G Jan 16, 1843 Feb 6, 1900

14-35 east On Govt stone Co H 2nd Mich Cavalry B G Gamble [Benjamin
enlisted Sep 15, 1861 in Warren for 3 years at age of 19. Mustered out Oct 2, 1861 due to gun shot
wound in right leg. He was discharged for disability at Detroit Jan 15, 1864.]

14- stone old unreadable

14-37 Spaulding Sadie Gamble wife of Burr Maynard Spaulding Sep 11, 1849 Sep 20, 1916*

14-38 Spaulding Burr Maynard Aug 22, 1849 Jan 15, 1926*

14-39 corner stone "S"

Totals: probable persons based on stones 22; total graves 51; total unmarked graves 29
Row 15 from W. Landmark is MASON BIG DARK GRAY MONUMENT 4 yards from fence

15-4 Mason J F May 17, 1862 Feb 22, 1899 had small stone Father*

15-5 head stone FATHER

recorded 1871 **Child** 15-8 Mason Willie J son of J G and E Mason b Mar 5, 1867 d Feb 15, 1871*

recorded 1871 **Child** Mason R Eltie son of J G & E Mason Aug 18, 1869 Jan 27, 1871 on Willie
stone* [MC death records show Mason Robert Feb 7 1871 1y 6m Scarlet Fever]

ten unmarked graves

15-19 several broken stones unreadable

unmarked grave wife of J Mason

Halsey Olive A wife of Silas E Halsey d Sep 15, 1854 ag 19* or 49 yrs 4m

unmarked grave Silas E Halsey and ten unmarked graves

not recorded **Child** 15-31 Wilson baby of B and A Wilson* nine unmarked graves

Totals: probable persons based on stones 7; total graves 51; total unmarked graves 44

Row 16 from W. Landmark is Hoyt 16-3 foot stone unreadable

16-5 Hoyt Ellen b Jan 29, 1815 Aug 20, 1895 on James stone*

Hoyt James W Dec 8, 1815 Dec 13, 1890 on Ellen stone

16-6 head stone FATHER also had Mother marker* 16- big tree

eighteen unmarked graves

16- stone fragments unreadable

16-18 Royce Silvenus B d Dec 26, 1865 ag 51 yrs 13 ds* Rest sweetly, thou
departed one, though sorrow fills this heart of mine, Ere long, life's tedious journey done, my spirit
freed will seek out thine. unmarked grave spouse of Sylvenus Royce

16-19 Bowden Margaret wife of B T Bowden d Dec 5, 1882 aged 55 yrs 7 mos 4 dys*

16- stone fragments unmarked grave B T Bowden

16-21 Gregory, Solomon died May 14, 1864 aged 75 yrs

George S son of Salmon and Maria Gregory who died Feb 21, 1961 in the 28th year of his age
had stone Son ? John? ag 73 six unmarked graves

16- stone fragments and 2 foot stones at water tap

16- Kingscott John d Mar 25, 1863 ag 65 6mo 22ds stone JK*

16- 28 Kingscott Barbara Ann wife of John Kingscott d Mar 21, 1862 ag 66 7d*
stone BAK In the Christian's home in Glory, there remains a land of rest, There my Savior's gone
before me, to fulfill my soul's request, Where is rest for the weary.

16-26 unreadable

16-27 Hitchcock ? D 18? ?217?

16-28 Hitchcock Louisa C wife of B F Hitchcock & dau of J & B Kingscott d

Feb 28, 1863 ag27 8m 5d * also had stone LCH
had stone hilich?? Albvisa C wife of ? 1831? [might be Rebecca Watson]
also several stones by fence sixteen unmarked graves

Totals: probable persons based on stones 12; total graves 51; total unmarked graves 39
Row 17 from W. Landmark is Glazier TALL WHITE STONE 3 yards from fence
17-3 Glazier Jennison F d Dec 7, 1869 ag 65 10ms 29ds*

Rest thee loved one, rest thee calmly, Glad to go where pain is o'er, Where they
say not, in the night time, I am weary any more.

17-4 Glazier Electra wife of Jennison F d Oct 3, 1892 ag 85y 9m 3d*

A precious one from us is gone, a voice we love is stilled.

A place is vacant in our home, which never can be filled.

God in his wisdom has recalled the boon his love had given.

And though the body slumbers here, the soul is safe in heaven.

Two unmarked graves

not recorded **Child** 17-17 Sheire Laura E dau of J F & E Glazier d Nov 27, 1853 ag 17 10m 27d*

The dear companion of my life has gone, I mourn but murmur not that life is done, I sadly say, Lo
where this marble weeps, a wife, mother, sister, daughter sleeps. Monroe, Erected by her husband.

unmarked grave Monroe Sheire ten unmarked graves

not recorded **Child** 17-17 Jones James Henry son of Northup and Mary d Jul 30, 1840 ag 10yrs* had
stone NJ unmarked grave

not recorded Under 21 17-19 Jones Lucy wife of Samuel Jones d Aug 13, 1847 ag 19 8m 26 ds*
had stone LJ unmarked grave

17-21 Jones Mary wife of Northup d Jun 5, 1855 ag 63* had stone "our Mother" & MJ
two unmarked graves NEEDS MARKER

Jones Northup d Aug 17, 1841 ag 58y 4m 29d stone broken on ground* Actually
the man's name was spelled Northrup Jones but it is spelled Northup without the second r on his stone.
He was one of the very earliest settlers. Listed in 1881 Hist of Macomb County

unmarked grave Samuel Jones fourteen unmarked graves

17-26 Van Meer Ella d 1916

17- foot stone

17- Van Meer Elgin d 1917

17- foot stone

17-42 Masten Herbert Jr Jan 2, 1917 Jan 6, 1917*

17-43 Masten Herbert Sr 1871 1938*

17- white flat stone unreadable

Totals: probable persons based on stones 11; total graves 51; total unmarked graves 40

Row 18 from W. Landmark is STANLEY TALL WHITE OLD STONE 5 yards from fence

18-4 head stone MOTHER

18-5 Stanley monument tall white old stone

Stanley Catherine Aug 1, 1805 Dec 25, 1884 on Washington stone*tall white old stone

Stanley Washington d Feb 7, 1883 ag76y 6m 5d tall white old stone*

not recorded **Child** 18-5 East Stanley our Dau Elsie E Feb 2, 1897 Apr 29, 1897* little lamb stone 2m

recordedChild 18-6 Stanley Bernard B our son Jan 24,1895 Oct 9, 1896* little lamb [1y 8m 15d]

{StanleyBernard Oct 9 1896 1y 8m croupJames & Christine Stanley }

18-7 west. head stones FATHER and MOTHER

18-8 west. Stanley Benjamin E d Apr 5, 1863 ag 31y 2m 22d*

18-13 east. Stevens Merrill L 1912 1975

18-14 east. Stevens Fred W 1894 1959

18-15 east. Stevens Sylvia A wife of Wm Richards Oct 19, 1900 Oct 12, 1931*

18-16 east. stone FLAT FACE DOWN

18-16 Stevens Claribel wife of L M Simpson May 6, 1897 Mar 16, 1923*

18-18 Stevens Ormal D Dec 10, 1898 killed in France July 19, 1918

American Legion Marker* The following found on a note: "The son Ormal Stevens killed in WWI was a constant tragedy to his parents. John slowly died of TB kabus 18-19 big Stevens monument
 18-20 Stevens John E Aug 19, 1907 Apr 4, 1928* from Twp record son of Ormal & Sarah A Rickabus. Mechanic.
 18-21 Stevens Ormal B Sep 15, 1868 Feb 29, 1936* son of John b Stevens Canada, & Agnes Cromie, b Ireland. Occupation Night Watchman. Husband of Sarah Rickabush. From township record.
 18-22 Stevens Sarah A Jul 4, 1873 Apr 21, 1955 six unmarked graves
 18-26 Corey George W Corey d Oct 6, 1862 ag 49y 11m 4d stone on ground*
 not recorded **Child** 18-28 west. Corey William H son of Geo W & Narcissa b Jun 10, 1849 June 26, 1851 ag 2y 16d* unmarked grave
 Corey Polly M wife of Geo W dau of Abr'm Freeland d Aug 14, 1844 ag 22y* unmarked grave Narcissa Corey
 18-28 west. Hitchcock Henry L d July 18, 1862 ag 34y 1m 8d stone on ground footstone H LH* unmarked grave wife of Henry Hitchcock and another unmarked grave
 18-30 west. Hitchcock Thomas d Mar 21, 1868 ag 73y 4m 22d* eight unmarked
 18- Hitchcock Nelly A wife of Thomas * d April 27, 1874 ag 68y 24d
 8-37 west Hitchcock Melissa consort of Orley May 1, 1816 Sep 10, 1846 ag 30y 4m* in back Sleep, dearest sister. Had stone MH unmarked grave Orley Hitchcock
 18-42 west. Davy Henry Oct 18, 1871 Dec 3, 1906* PIONEER FAMILY IOOF emblem
 18-42 east. Flynn J C M D 1850 1910 had stone Father & Forester's emblem* IOOF
 Flynn Annie E 1849 1942 Flynn Ellen Hanna 1833 1902*
 18- stone unreadable 18- unreadable 18- unreadable 18- unreadable
 Richards Simpson * three unmarked graves
 Jay ? flat stone weathered unmarked grave
 Wi ?? weathered unmarked grave
 Totals: probable persons based on stones 24; total graves 52; total unmarked graves 28
 Row 19 from W. Landmark is West Gate and drive two little Stanley lambs at left
 Row 20 from W. Landmark is Gray worn standing stone 2 feet tall to N East
 20-4 Gray Isaiah T Apr 16, 1852 Jan 11, 1885* standing stone 2 feet tall
 unmarked grave wife of Isaiah 4 unmarked graves on lot and unreadable stone
 Morris Robert d 1851
 20-4 Morris Cyrena E wife of Robert d Mar 15, 1854 ag 54 stone flat on ground*
 I loved her on earth, May I meet her in heaven. Twenty unmarked graves
 not recorded **Child** Davy George son of Charles & Eliza J d Jan 4, 1849 ag 6 mo stone broken and flat on ground* Totals: probable persons based on stones 4; total graves 52; total unmarked graves 48
 Row 21 from W. Landmark is Case monument tall white stone N east of drive 25' from fence
 21-7 Case Chloe wife of Emanuel Case d Jan 1, 1881 ag 61 on Case monument *
 Emanuel Case 1812 1898 father 21-8 foot stone
 Case Deborah small marker unmarked grave Mother
 unmarked grave small marker* seven unmarked graves
 21-13 Wright Robert C d Feb 20, 1867 ag 49 marking defaced flat on ground
 had stone RCW also foot stone in ground
 21-14 Wright Anna M wife of Robert C Wright, England Apr 5, 1830 Mt
 Clemens Dec 12, 1894 flat on ground broken, also footstone in ground
 To live in hearts we leave behind is not to die.
 21-16 Davy Rev Charles, Pioneer d Mar 22, 1883 aged 85y 10m*
 21-16 foot stone C D
 21-16 stone face down
 six unmarked graves
 21-17 Davy Lydia wife of Charles d Apr 23, 1872 ag 78 5m 6d*

not recorded **Child** 21-23 Higgin Ross C 1911 1912*
 21-23 foot stone
 and four additional unmarked graves

not recorded **Child** Heartsig G George son of W E & C d Feb 5, 1857 ag 3-1-11 stone GCH *

not recorded **Child** Heartsig Catherine S dau of Louise & Catherine d July 11, 1876 ag 10 mo 15 ds*

not recorded **Child** Heartsig Mary E dau of L & A d Mar 14, 1852 ag 1 mo 6 ds*
 21-24 head stone MOTHER [Wilson]
 21-25 Wilson John d May 27, 1867 ag 71* + foot stone FATHER
 21-26 Wilson monument tall old worn at far east side of row
 Wilson John Mar 31, 1796 May 27, 1867* PIONEER FAMILY
 Wilson Jane Nov 12, 1807 Sep 15, 1887*
 21-26 MOTHER [Wilson]
 21-27 head stone FATHER [Wilson] plus 2 small markers matching monument
 21-28 Lewis Hartsig d 1862 aged 33

not recorded **Child** 21-29 Heartsig Sara M dau of L & A d Oct 1, 1855 ag 3 mo* unmarked grave

not recorded **Child** 21-30 Hartsig L A Marin? daughter of Louis & Catherine d 1871
 21-31 Big Hartsig monument
 Hartsig Catherine wife of Louis Dec 6, 1842 Jul 23, 1909* {Hartsig Catherine Jul
 23 1909 widow 66 7 17 Bright Disease b Germany George Busch b Germany mo Unk}
 Hartsig Angeline wife of Louis May 10, 1828 Feb 17, 1862 ag 33 broken*
 Hartsig Louis Dec 13, 1825 Apr 9, 1905*
 Unknown Soldier in area
 21-34 Ebert George Aug 19, 1855 ag 49*
 Susan Ebert d Mar 13, 1870 ag 71y 10d Erected by her son Jonas. stone SE*
 "Jesus has called Our dear Mother home, Her flesh lies mouldering in the tomb,
 God grant her offspring may be blest, and meet her in eternal rest."

not recorded **Child** old stone Ruban d Mar 13 1870 ag 4 cory?
 21-37 unreadable child stone
 21-37 Son of Charles & Hannah d 1901 ag 29 from record Harrington, Charles d
 Nov 30, 1901 ag 29-1-12 son of Chas Harrington, York State & Celestia Robesson, Mi single
 unmarked grave Celestia Harrington
 21-37 Harrington Charley son of Charles and Celestia d Nov 30, 1901 ag 29 224*
 Case Emanuel 1812 1898 Father*

Totals: probable persons based on stones 22; total graves 52; total unmarked graves 30
 Row 22 from W. Landmark is Hoxsey low gray stone 2 yards from fence
 22-2 Hoxsey Abigail C 1865 1929 low gray stone
 22-6 Lionel Cline flat

not recorded **Child** Cline Alice dau of M & E d d Nov 1, 1861 ag 18 mo
 unmarked grave The Cline parents two unmarked graves

not recorded **Child** 22-19 our baby no name nine unmarked graves
 22-27 stone MJM
 twenty unmarked graves
 22-29 head stone unreadable
 22-38 head stone GE by big stump
 22-40 Reddick Lloyd F Army veteran 1893 1976*
 M J M 1872 unmarked grave two unmarked graves

Totals: probable persons based on stones 7; total graves 53; total unmarked graves 46
 Row 23 from W. Landmark is Jenny big gray stone 15 yards from fence
 fourteen unmarked graves
 23-13 Jenney Annie L wife of W N May 13, 1865 Oct 15, 1906*
 23-15 Jenney monument big gray monument

Jenney Almon D Sep 25, 1816 Dec 15, 1910* on Jenny
 Jenney Zaida N wife of Almon Mar 17, 1823 May 15, 1907*
 23-17 head stone FATHER
 23-18 head stone MOTHER
 23-19 Jenney Leonard D 1861 1885 ag 24y 10m 10d * Our Brother
 four unmarked graves
 23-23 Jenney Horace P 1809 1849* two unmarked graves
 23-28 Reddick monument off center of row on west side
 not recorded **Child** Reddick Myrtie G Jun 27, 1881 Mar 25, 1885* stones MGR BR MOTHER
 not recorded **Child** Reddick baby Nov 30, 1886 Jan 28, 1887*
 23-26 Warrenner monument tall gray worn stone
 Warrenner John Jun 1, 1821 Nov 25, 1896* had foot stone FATHER
 23-27 Warrenner Sarah Ann wife of John 1824 Oct 2, 1853 ag 26y 10m 20d * tall gray worn
 23-28 Warrenner Sharlott W 2nd wife of John 1825 d Apr 8, 1862 ag 33y 1m 8d*
 unmarked grave 23-30 Warrenner Lydia wife of John 1826 d Feb 22, 1882 ag
 56 10 ms* stone LW
 not recorded **Child** Warrenner John G or C son of John and Lydia d Feb 24, 1871 ag 5y* stone Jony
 23-33 Reid Neil W Jun 15, 1899 Aug 2, 1918 WWI Soldier killed in France*
 23-35 Reid J Melvin Dec 30, 1866 Dec 25, 1931 Lodge markers IOOF and
 23-36 Reid Mary V 1868 1956 four unmarked graves
 23-42 MOTHER*
 23-43 Willis monument big gray monument
 Willis Catherine d May 24, 1896 ag 79* big gray monument
 Willis Henry Oct 10 1848 Aug 31, 1911*
 23-43 east. MOTHER Wills Katherine 1867-1947
 23-44 head stone Henry unmarked grave Henry
 23-44 east. Willis Michael 1852 1926*
 Totals: probable persons based on stones 16; total graves 53; total unmarked graves 37
 24-1 head stone FATHER 24-2 head stone MOTHER
 24-3 Benson monument tall gray stone
 Benson Orin Jun 17, 1802 Nov 10, 1876* on Benson Monument
 He walked with God and was not For God took him.
 Benson Lydia M Sep 23, 1814 Feb 4, 1892*
 She died as she had lived trusting in God.
 24-4 Stones DB, Ira, Mary, MOTHER, FATHER
 24- Benson Ira F 1836 1910*
 24- Benson Mary E 1843 1904*
 24-4 head stone unreadable unmarked grave
 24-6 foot stone unreadable two unmarked graves
 24-5 Ellen Kidd 1845 1893 Mother MC rec 236 Kidd Sep 30 1893 single 52
 Consumption b England par Thomas Hearn of Cady Mi & unknown
 unmarked grave Mr Kidd Is possible Civil War Veteran
 twenty unmarked graves
 not recorded **Child** 24- Barton C Lucinda dau of R and E A d Oct 5, 1856 ag 1yr 8 m 13 ds*
 24-37 Emma L 1861 1947 Rufus H 1852 1924 big red granite low
 six unmarked graves
 Totals: probable persons based on stones 9; total graves 53; total unmarked graves 44
 Lot Row 25 from W. Landmark is Ames FLAT WHITE
 25-1 east. Langell small square stone flat
 not recorded **Child** 25-1 Ames Willie son of J & L L Ames d Mar 22, 1862 ag 10 days*

unmarked graves
 25-2 Burke Francis J 1914 1967*
 25-4 Burke Myles J Sr 1880 1968*
 25-5 Burke Annie M 1881 1974
 unmarked grave
 25-7 Eugenia Langell nee Horsey 1880 1945
 25-8 Frank A Langrill 1873 1916
 five unmarked graves Langrill
 25-12 Langill corner stone white
 six unmarked graves
 25-14 bench
 not recorded **Child** 25-16 Soden Baby stone plus footstone*
 unmarked grave Soden
 unmarked grave Soden
 25-18 Chipchase George 1840 1909*
 Chipchase Amelia 1844 1919*
 unmarked grave
 not recorded **Child** 25-25 Hoard Mary E dau of L & L d Mar 28, 1866 stone on ground ag 16 11ms
 28ds* stone MSH
 not recorded **Child** Hoard Levi son of Gurdin W d Apr 11, 1856 ag 3yrs 11mo 6 ds stone LH

 25-28 Soden Margaret wife of Eugene d Mar 24, 1904 ag 49* IOOF marker
 25-30 Our baby white flat foot stone not marked
 head stone FGB unmarked grave
 unmarked grave with lodge marker
 Eugene Soden unmarked grave
 25-31 Soden Ellenor wife of Eugene d May 13, 1879 ag 27y 9m 13d stone ES*
 25-33 Walker Dawn 1877 19--*
 25-34 Walker Ned 1872 1926*
 25-35 Stanley Elijah Jan 13, 1832 Oct 19, 1906 ag 73*
 Stanley Caroline wife of Stanley Sep 1, 1837 Mar 28, 1901* dau of David
 Rinthes & Lilian Grodel, married
 markers Mother Husband
 25- unreadable
 not recorded **Child** Extine Geo D Feb 15, 1867 ag 2* stone GDE seven unmarked graves
 not recorded **Child** 25-41 Matthews Esther L 1925 1925* unmarked grave Mr Matthews
 unmarked grave unknown
 Totals: probable persons based on stones 20; total graves 53; total unmarked graves 33
 Row 26 from W. Landmark is McDowall old GRAY 21/2 feet high 8 yards from fence
 26-8 McDowall Rev Ebenezer born in Fredericksburg, Canada West Jan 3, 1807 June
 19, 1862 died in Warren* seven unmarked graves
 26-14 Bartels Christopher d Dec 8, 1887 ag 26y 3m * had cedar hedge
 26- foot stone "C S"
 two unmarked graves
 26-17 Bartels Henry Oct 1, 1849 Mar 21, 1881 Our Brother stone HB*
 not recorded **Child** 26-18 Bartels Elle dau of J & H d Aug 11, 1877 ag 17 17 ds*
 26-19 top of Bartels monument
 26-21 Bartels monument + stone MOTHER
 Bartels Johannah wife of H d Sep 13, 1886 ag 55 5mos
 26- foot stones Mother* CGB, HB
 not recorded **Child** 26- Bartels Charles G son of H & J d Oct 12, 1859 ag 1mo*

not recorded **Child** 26- Bartels Harmon son of H & J d Mar 5, 1856 ag 1 mo 6 ds* six unmarked graves Elias Beach d Oct 2, 1854 ag 77y 8 m 5 ds flat on ground
 Hannah wife of Elias Beach d Mar 18, 1862 ag 82 yrs four unmarked graves
 26-27 stone unreadable
 26- stone unreadable
 26- stone unreadable
 26-30 McCoy Ellen S wife of John d Apr 1, 1890 ag 85y 6m 5d*
 26-31 McCoy John d Apr 10, 1874 ag 71ys 10 m 26d*[md Killed by cars]
 26-33 McCoy Everett W Apr 21, 1834 Aug 16, 1872 Our Brother*
 five unmarked graves 26-37 Young Ellen E wife of Christopher C d Jun 18 1855 ag 23y 1d * had stone EEY

not recorded **Child** 26-38 Young Charles H son of CC & EE d Jan 23, 1854 ag 2 mo 19d* unmarked grave probably Christopher Young unmarked grave extra lot
 26-38 flat stone "usinda? d1856 she" five unmarked graves
 26-41 Norris W Emmitt 1855 1928 Father Clarence Walter* Twp record b Clinton Co Mi Mar 6, 1855 d Jan 7, 1928 son of John N & Amanda Emmons, New York NY. Husband of Harriet Halsey. Retired farmer
 26-42 Norris Hattie A 1861 1937 Mother*
 Norris Harriette A b Dec 1861 d May 29, 1937 aged 75-5-5 dau of John Halsey and Elizabeth Parton of NY. Wife of Walter E Norris res 5521 Garden Ave. Mo of John Norris, Yale Mi.

not recorded **Child** Norris Sidney T ag 5 days*
 Walter Norris unmarked grave
 possible unmarked grave of Clarence Walter Norris and spouse unmarked graves

Totals: probable persons based on stones 19; total graves 54; total unmarked graves 35
 Row 27 from W. Landmark is Hartlin low stone flat 20 feet from fence
 27-3 unmarked grave outlined in cement
 27-4 unmarked grave outlined in cement
 27-6 Hartlin low stone
 27-6 Hartlin Elisobet frau von John d Jan 18, 1867 ag 54*
 27-6 Hartlin Elizabeth 1813-1867 wife of John new stone
 27-6 old standing unreadable
 27-6 west. foot stone
 27-9 Busch monument tall big stone
 Busch Anna Margaretha Dec 28, 1801 May 26, 1888*
 Busch John Frederick Nov 26, 1835 Mar 25, 1864* tall monument
 Busch John George Apr 20, 1805 Nov 30, 1895* C B
 27-10 head stone MOTHER
 27-11 head stone FATHER

not recorded **Child** 27-14 Pereira Charles son of M J & C May 16, 1866 July 5, 1866*
 unmarked grave Parents of Charles
 unmarked grave Parents of Charles
 27-15 head stone unreadable unmarked grave
 27- head stone unreadable unmarked grave
 27-16 head stone unreadable unmarked grave
 27- baby augusta or bushe...may

not recorded **Child** 27-18 Pearsall Adelia d May 25, 1876 ag 2y 7m had foot stone AP
 above stone had round top rectangle chunk out of it
 27-21 Elegty wife of Daniel Pearsal d Feb 28, 1860 ag 48
 27-22 unreadable
 27-23 Daniel Pearsal Dec 16, 1804 Oct 13, 1874 had stone DP
 twelve unmarked graves

27-27 Wilson Franklin H son of Moses & Anna d Apr 27, 1864 ag 30ys 10 mo 19ds
foot stone unmarked

27-28 Wilson Moses b Nov 6, 1803 Landaff, Putnam Co NH, d Feb 22, 1838 Warren Mi*
eighteen unmarked graves

not recorded **Child** Green Jennett dau of R & L May 16, 1867 ag 11ms 16ds *
27-42 Rickabus monument
Rickabus Sarah H Oct 1, 1824 Oct 21, 1900*
Cordy George Jan 6, 1864 Nov 19, 1895 on Rickabus monument*
27- old stone unmarked grave two unmarked graves
27-41 George
27-42 MOTHER

Totals: probable persons based on stones 20; total graves 54; total unmarked graves 34
Row 28 from W. Landmark is row just east of historical marker and flag pole
28-5 Historic Marker
28-11 Big Rock
28-21 Flag Pole

not recorded **Child** 28-28 Wells Hannah L dau of John and Eliza d Jun 7, 1856 ag 1yr 4m*
28-34 Cement Bench
28-35-40 Butterfly Garden
28-44 Weig Heinrig Aug 11, 1849 Oct 2, 1882*

not recorded **Child** Weig John Friedrich 1879 sep 6, 1895 also small markers Heinrig, John, Father*
Ruth, FranzCarstrn no space Feb 20, 1818 Nov 16, 1890*
28-44 east Rath Friedrich Feb 14, 1815 Aug 23, 1878 ag 63yr 6m 9ds*
28-47 Ege Dhihe worn broken unmarked grave

28-49 Keil Katherina Eho Gattin of Ludwig b in Rulisheim Hesson-Darmatadt Aug 21,
1814 Mar 28, 1881 ag 66 3m 17d-- *
Ludwig Keil Mar 12, 1820 Apr 24, 1885
28-51 Maerz Heinrich Ph Maers Mar 30 1835 Jan 6, 1892*
Maerz Ludwig 1820 1885*

not recorded **Child** Maerz Goorg W Oct 6, 1879 Jun 16, 1883* marker FATHER
unmarked grave plain marker 28-54 foot stone 28-55 fence corner

Totals: probable persons based on stones 12; total graves 66; total unmarked graves 54
Row 29 from W. Landmark is Panzer red stone 3 feet high 10 feet from fence
29-3 Panzer William F 1888 1938*
29-4 Panzer Charles Nov 11, 1842 Dec 18, 1922*
Panzer Susanna Jan 2, 1848 Aug 19, 1903* six unmarked graves
29-8 corner stone "strich" 29- corner stone
29-9 head stone MOTHER
29-11 Strich Maria Mar 22, 1851 Nov 12, 1902
small marker Mutter* and lot corners Strich
29-13 Warner Ida M Mar 21, 1884 Oct 14, 1923*
six unmarked graves
29-21 Muller Christian Dec 23, 1842 Feb 14, 1892*
six unmarked graves

not recorded **Child** 29-23 George J Measel son of J & C Measel Jul 1, 1880 Dec 12, 1892
four unmarked graves
29-28 Muller Christiana Aug 12, 1852 Jun 24, 1888 stone Mutter*
four unmarked graves
29-31 Pinnow Gottlieb Jul 25, 1813 Aug 16, 1887 stone Vater*
29-32 ten stones piled up foot stones, corner stone, one W P needs careful read
15 unmarked graves

29-35 bench
 29-43 foot stone
 29-45 Heipel J Jan 20, 1822 Apr 9, 1904*
 Heipel Mary wife of J Jan 8, 1826 Oct 16, 1920*
 stone MOTHER
 not recorded **Child** Heipel George d Dec 12, 1873 ag 6 yr 11m 11d
 Willie d Jan 12, 1873 ag 3y 3m 13 d see more Heipel in row 30
 29-49 stone needs careful read
 29-54 Follhardt Henry d Mar 10, 1879 ag 33y 2m 23d*m tunnel
 29-54 foot stone HF
 Totals: probable persons based on stones 13; total graves 66; total unmarked graves 53
 Row 30 from W. Landmark is Miesel 1 ½' tall old gray monument 10' from fence
 30-3 Miesel Gottfried Dec 28, 1840 1922*
 30-4 Miesel Godfried 1849 needs careful read tall gray
 Miesel Margerethe L May 13, 1850 Nov 7, 1899*
 not recorded **Child** Miesel Maggie E Jul 9, 1884 Oct 11, 1891 + small marker Mother Maggie*
 30-5 head stone unreadable
 30-6 head stone unreadable
 30-9 Ernst (Schmidt) *
 30-10 Wilhelmine (Schmidt)*
 30-11 Schmidt BIG GRAY MONUMENT Ernst Jan 31 1849 Jan 14, 1912*
 Wilhelmine Mar 28 1858 Sep 4, 1919*
 Baier Emma Sep 16, 1890 Mar 26, 1915 on Schmidt monument*
 30-12 Emma
 five unmarked graves
 recorded **Child** 30-16 Pennow Walter M 1924 1928 "beloved son"* but Twp record states
 b Nov 11, 1924 d Oct 12, 1923 son of Wm Pennoe & Lizzie Barg of Warren
 recorded **Child** 30-17 Pennow Betty Jean 1926 1933 "beloved daughter" * township
 record bAug 9, 1926
 d Feb 2, 1933 dau of Wm Pennow of Warren & Lizzie Barg of Macomb County.
 30-18 Pennow Lizzie 1900 2001 *
 Pennow William 1895 1977 *
 six unmarked graves
 30-22 Marsall Ben J 1869 1940*
 30-24 underground
 30-28 head stone FATHER
 30-29 head stone MOTHER
 eight unmarked graves
 30-30 Dill John Sep 4, 1819 Dec 28, 1902
 Dill Johanna Seine frau Oct 12, 1823 Jan 11, 1908 * tall monument
 30- Mutter
 30- Vater
 30- Elizabeta seven unmarked graves
 30-35 Langermann Frederick 1845 1902*
 30-36 head stone FATHER Langermann
 30-37 Langermann Dorothy L 1844 1903 * big monument
 Langermann Fred 1883 1932*
 30-39 head stone MOTHER
 30-40 Hilliard Ida Jun 18, 1880 on Langermann lot * four unmarked graves
 30-43 smit Emma children of Jacob & Mary 1860 1956*
 Heipel Edward children of Jacob & Mary 1865 1941*

big tree branch watch your head I didn't ouch! crash!
 30-44 Siegle J F Jun 25, 1825 Feb 26, 1907*
 Siegle Christina wife of J F May 28, 1824 Jun 2, 1899*
 30-45 head stone unreadable
 30-48 unreadable four unmarked graves
 30-48 corner stones
 30-50 base
 30-50 west. FATHER
 30-51 Qualmann Johann May 11, 1848 Apr 16, 1923* tall monument
 not recorded **Child** Qualmann Auguste A K Jun 12, 1876 Jul 27, 1876 27d* 30-52 base
 not recorded **Child** 30-53 Qualmann Heinrich J C Feb 2, 1880 May 18, 1890 * foot stone HJHQ
 Qualman Henry 1890 May 18 ag 11y b MI John/Sophie Diphtheria Macomb County Record 249
 Qualmann Sophia May 19, 1846 Feb 5, 1902 * {Qualmann Sophia Feb 5 1902 marr 55
 8 11 diabetics b Germany Henry Fasel Margaret Gano Germany} 30-54 corner stones
 30-52 head stone MOTHER
 30-58 broken stone unreadable unmarked grave may be Fasel were inside qualman enclosure
 Fasel Joachim H H Feb 21, 1818 Sep 13, 1882* foot stone MOTHER
 Faser Joachim J H Jun 16, 1848 Feb 28, 1884* foot stone FATHER
 Fasel Catharina M Mar 8, 1800 Apr 27, 1880 & 14 was written above the 1800* making it 1814
 unmarked grave spouse of Fasel
 30-59 Schmidt Theodore 1838 1922 * big monument by fence
 Schmidt Sophia 1838 1919 *
 Totals: probable persons based on stones 31; total graves 66; total unmarked graves 35
 Row 31 Landmark is Warren Union Cemetery Sign on fence or Schiebel
 31-3 Schiebel Joseph 23 1850 1952* low red stone 8" high almost 2 yards from fence
 31-4 Schiebel Sophia 1853 1934 *
 31-5 head stone unreadable
 31-6 Schiebel tall old monument
 not recorded **Child** Schiebel Wilhelmina on Adam stone Dec 23, 1885 Jun 1, 1886*
 not recorded **Child** Schiebel Adam Aug 8, 1883 Nov 8, 1892* foot stone Adam 3 unmarked graves
 31-9 head stone Wilemina
 31-10 head stone Veilchen
 31-11 head stone Mutter
 31-13 head stone Vater
 31-14 Zoellner Carl Jun 28, 1830 Mar 30, 1911* big monument
 Zoellner Caroline Mar 8, 1842 Apr 12, 1921 *
 Zoellner Carl F Dec 19, 1865 Dec 24, 1927 *
 31-15 head stone Carl (Zoellner Carl F)*
 fifteen unmarked graves
 31-26 Schneider Elizabeth 1862 1919*
 Schneider George Sr Dec 15, 1833 Nov 28, 1910*
 Schneider Martha seine Gattin geboren Koch May 20, 1838 Apr 10, 1911*
 31-28 Vater
 31-29 Mutter
 31-31 Elizabeth
 eighteen unmarked graves
 31-43 Rose Mary M 1874 1901 *
 31-43 Rose John 11-25 or bible verse?
 eighteen unmarked graves
 31-32 Jacob big big monument
 Jacob Charles Sr Oct 21, 1841 Dec 19, 1909* big monument

Jacob Anna on Charles stone Jun 19, 1850 Oct 18, 1919 *
 31- unreadable
 31- unreadable
 31-54 several corner stones with J
 not recorded **Child** 31-57 Hartlein Maria Apr 10, 1871 Oct 5, 1874 stone MH
 not recorded **Child** 31-59 east. Busch Rosa Lena Aug 30, 1862 Aug 12, 1875 *
 31-60 located by North fence stone RLB
 31-58 west. Eckstein F Jul 3, 1810 Nov 12, 1890 *
 Eckstein Mary wife of F Oct 1, 1817 Apr 28, 1894 *
 31-59 head stone unreadable could be MOTHER
 31-60 head stone unreadable could be FATHER
 Totals: probable persons based on stones 22; total graves 66; total unmarked graves 44
 Row 32 from W. Landmark is Kusch tall gray monument old worn 6 yards from fence
 six unmarked graves
 not recorded **Child** 32-6 Kusch Johann Karl Jan 11, 1885 Jul 6, 1886* 5mo
 32-8 big tree
 32-11 Behrns Henry F Dec 23, 1849 Jul 28, 1930 *
 Behrns Bertha wife of Henry Nov 12, 1860 Aug 30, 1901*
 32-13 head stone MOTHER
 32-14 head stone FATHER
 32-15 DeGrandchamp Emma B 1885 1957*
 32-16 Sampson Agnes B 1881 1963 *
 32-18 Behrns Joachim Jun 11, 1808 Apr 2, 1888*
 32- Behrns Sophia geb Engel Jan 2, 1820 Apr 1, 1891*
 32-18 head stone FATHER
 32-18 head stone MOTHER
 32-19 head stone unreadable
 32-20 head stone unreadable
 32-29 Karn Peter 1855 1897* {KarnPeterJan 10 1898 ag42 5m marr
 Consumption b Germany farmer Peter/Mary Apple Macomb County rec 183}
 Karn Katherine 1857 1951*
 32-24 Emig Louise H 1894 1969* missing in whgs book
 Emig Alvin L 1887 1973*
 32-26 Armour Marie A 1882 1980*
 six unmarked graves
 32-32 Thompson Helen nee sinn 1897 1942*
 four unmarked graves
 not recorded **Child** 32-35 Stiens Luis son of Otto & Julia Jan 14, 1899 Aug 24, 1900*
 not recorded **Child** 32-36 Stiens Frederick son of O R & J Jan 25, 1898 July 28, 1898*
 not recorded **Child** 32-36 son of Julia baby
 32-37 Stiens Julia 1874 1935 *
 32-39 Stiens Otto R 1870 1942*
 Stiens Willhelmine geb Schwanbeck Nov 25, 1825 Aug 20, 1886*
 ten unmarked graves
 32-49 Kulp Amelia 1885 1965*
 32-51 Rose William A 1887 1919*
 32-51 west head stone FATHER (Jacob)
 31-43 Rose Mary C 1856 1930* BIG DARK RED stone
 31-43 Rose John* this is in row 31 but likely related bible verse?
 32-52 west head stone MOTHER (Jacob)
 32-52 Rose Mary C 1856 1930*

32-53 Rose William C 1843 1930* unmarked graves
Totals: probable persons based on stones 25; total graves 66; total unmarked graves 41
Row 33 from W. Landmark is Grimms flat stone next to tall monument
33-2 Grimms Louisa 1858 1907
33-3 Grimms Frederick E Apr 19, 1856 Jul 6, 1926 Masonic Emblem* low stone
33-4 Grimms tall old monument
Grimms Louisa on Frederick stone Dec 31, 1853 Aug 4, 1907*
Grimms Frederick E 1856 1926 Masonic emblem
not recorded **Child** 33-5 Baby Grimes Anna Grimms Oct 6, 1881 Apr 29, 1893* lamb [11]
not recorded **Child** 33-7 Grimms Johannes Feb 13, 1887 Apr 22, 1893* lamb [6ys]
33-10 Crimes Edward W Sep 16, 1890 Jan 25, 1919 Died in Service
Am Legion Masonic emblem* + corner stones "Grimes"
33-13 Grimms Henry Aug 19, 1880 May 3, 1943 *
33-14 Grimms Mary Feb 27, 1874 Nov 13, 1955*
33-18 Steins monument
33-19 head stone
33-20 stone unreadable
33-23 Beier Elmer Jun 4, 1901 Jan 21, 194
Beier Minnie Apr 20, 1863 Jan 6, 1922 *
33-25 Mini low stone 5*
33-25 Beier Fred Nov 27, 1859 Nov 29, 1944*
33-27 Beier TALL OLD MONUMENT
not recorded **Child** Beier Walter son von F & M 26 Nov, 1893 Jan 17, 1895*
Beier Ida Apr 26, 1828 Feb 14, 1907*
Beier August K Feb 25, 1826 Apr 25, 1893 *
Beier Wilhelmina Apr 20, 1863 Jan 6, 1922*
33-28 FATHER
33-30 MOTHER
33-31 Walter might be Boening
sixteen unmarked graves
33-43 Boening Edward A 1877 1961*
33-44 head stone unreadable
33-45 west. Boening Mother 1852 1937*
33-45 east. Boening monument tall
33-46 Boening Father 1848 1920*
33-47 foot stone unreadable
33-47 Boening Wilhelm 1888 1918* Father
33-48 Boening monument Big Gray monument
not recorded **Child** 33-49 east. Boening Julius 1882 1883*
not recorded **Child** 33-49 west. Boening Albert 1879 1879*
not recorded **Child** 33-25 Boening Walter Sep 20, 1902 Sep 30, 1906*
Boening G E Jun 6, 1821 Apr 28, 1901* stone FATHER NEEDS MARKERS
Boening Ernestine W geb Klatte on G E stone Jul 22, 1824 Sep 23, 1886* stone
MOTHER 33-50 Lorenz Elizabeth Dec 17, 1823 Feb 3, 1884*
not recorded **Child** Hertlein Marie 1871 1874* twelve unmarked graves
Lot Row 34 from W. Landmark is Berz LOW DARK GRAY FLAT STONE 3' from fence
34-1 Berz Ada P J 1873 1967 *
34-3 head stone FATHER
34-4 east. Berz George P 1845 1931 *
Berz Mary J 1852 1923*
34-5 MOTHER west.

not recorded **Child** 34-6 Berz Otto son of G P & M 1878 May 17, 1881 ag 2 5m 13ds*

not recorded **Child** Berz Emma May 1, 1884 Jun 5, 1892 on Otto stone * four unmarked graves
 34-11 head stone unreadable
 34-12 Berz old tall monument gray
 FATHER Berz George B Oct 16, 1811 Mar 16, 1893 *
 MOTHER Berz Elizabeth M Oct 16, 1811 Jan 22, 1904 Mother*

not recorded **Child** 34-Berz Emma E 1884 1892*

not recorded **Child** 34- Berz Otto E 1878 1881 *
 34-14 head stone unreadable
 34-15 Schuster Eliza 1842 May 6, 1885 Mother*
 34-16 Schuster Edward 1837 1923 Father K P lodge marker*
 34-17 Schuster Eliza wife of E 1842 May 6, 1885 "Mother" ag 43 * tall
 34-18 Schuster Frank J 1874 1942
 34-22 Strich George 1828 1888*
 34-23 Steirs Mary 1853 1895 *
 34-24 Strich Sophia 1827 1905*
 34-25 Strich big gray marker
 34-28 Oswald Amanda Keller 1894 1952 "She lived but for others"*
 34-29 Noyes Dora Keller 1889 1944 *
 34-30 Keller Anna frau von O Keller P Farror May 4, 1860 Feb 1, 1897*
 Keller Otto Pfarror Jan 23, 1858 Jun 14, 1938 *
 34-30 east. head stone MOTHER

recorded 1902 **Child** 34-31 Keller Arnold Oct 12, 1900 May 10, 1902*
 34-31 Arnold
 34-32 Vater
 34-33 stone unreadable also had 3 markers "Arnold", MOTHER, FATHER
 34-37 Busch Louis E 1869 1948* BIG RED monument
 Busch Caroline wife of Louis E 1872 1904 * had stone MOTHER
 Busch Amelia wife of Louis E 1875 1917*
 Louis E 1869 1948 also B corner markers
 34-35 Caroline
 34-36 Amella
 34-38 Louis
 eleven unmarked graves

child 34-49 west. Our Baby born and died Aug BABY
 three unmarked graves

34-51 east. Otto Hanekow Sep 14, 1897 Aug 13, 1920
 34-52 west. Hanekow Minnie 1866 1936
 34-53 east Hanekow Wilmelm H E Jul 4, 1836 May 31, 1903 Old tall
 Hanekow Wilmelmine C Aug 22, 1838 Feb 28, 1907

not recorded **Child** Hanekow Otto our baby b & d Aug 4, 1924
 34-54 west. Hanekow William 1865 1934 unmarked grave

Totals: probable persons based on stones 32; total graves 66; total unmarked graves 34
 Row 35 from W. Landmark is Lee Berz flat stone dark gray West of gate
 35-3 Berz, Lee E 1898 1969 *
 35-7 Big tree stump head stone unreadable
 35-6 MOTHER
 35-9 head stone FATHER five unmarked graves
 35-10 Meirow stone tall worn 1867-1926 wife 1844-1888
 Meirow L Jun 17, 1837 Jun 4, 1920 under spirea bush*

Meirow Sophia wife of L Mar 4, 1844 Jan 30, 1888*
 35-11 Meirow Mary dau 1868 1924*
 35-12 Meirow Herman W 1883 1966*
 35-15 head stone unreadable
 35-16 head stone unreadable
 35-17 Gladey 1833 needs careful read tall worn monument
 Gladey 1833
 Gladey T C Jan 8, 1836 Dec 29, 1914*
 Gladey Maggie der Frau Apr 30, 1835 Dec 17, 1901*
 Gladey Retta Schr_ber Jun 8, 1797 Jan 13, 1893*
 five unmarked graves
 35-22 Mother Dorothea Wieg 1849 1929*
 35-24 Husband Theodore 1875 1948 * [Wieg]
 35-25 Wieg big marker BIG GRAY no names eight unmarked graves
 35-32 Zorn Whelmine 1871 1961
 William 1871 1954
 35-32 Zorn red tribute marker ree unmarked graves
 35-35 Bower Emma wife of M J Nov 25, 1868 May 26, 1896 *
 35-36 Bower Michael J 1862 1935 *
 35-37 Bower Katherine E wife of M J b Dec 2, 1868 d Jan 5, 1944 tall red stone
 Bower Emma 1868 1896*
 35-39 Bower Katherine 1868 low red marker
 35-40 Bower Jean Ellen 1934 1955 * low marker
 35-43 Scheer William Apr 1, 1848 Sep 2, 1883 also small stone William*
 Scheen William J Nov 30, 1814 Dec 29, 1893* stone FATHER
 Scheer Chatherine b Jun 24, 1820 * stone MOTHER
 35-45 head stone unreadable
 35-46 head stone unreadable
 35-47 head stone unreadable
 35-51 Dehn Friedrich J Sep 24, 1824 Jun 11, 1885* tall stone
 Lange Friedricke Dehn geb Lange Apr 7, 1833 Mar 1, 1895 *
 35- head stone unreadable
 35-52 Albert Hacker Jan 30, 1876 Jun 20, 1952
 35-53 George Hacker Mar 1, 1899 Jul 4, 1947 three unmarked graves
 35-57 mother Marie Schuer 1889-1929
 35-58 Wiss? Schuer worn unmarked graves

Totals: probable persons based on stones 32; total graves 66; total unmarked graves 34
 Row 36 from W. Landmark is Right Middle Drive Lee Berz to left, Big Berz
 monument to left, water meter in drive

Row 37 from W. Landmark is Baitinger FLAT STONE DARK GRAY to North East of gate

37-1 head stone M.A.

37-4 Baitinger Frieda J Oct 3, 1895 Mar 16, 1946*

not recorded **Child** 37-6 Baitinger our baby Dianne Gillis Sept 24, 1939 Sep 25, 1939*

37-7 Baitinger Gottlieb E Sep 22, 1895 Sep 9, 1930*

Baitinger Mein Liber GHatto Unsor Guter Vater*

four unmarked graves

37-11 Eckstein Lambert L Sep 17, 1842 Mar 25, 1926* gray old tall stone

Eckstein Augusta L wife of Lambert L d Nov 12, 1890 ag 45yrs

37-12 head stone FATHER

37-14 head stone MOTHER

37-15 head stone FATHER

37-16 head stone MOTHER
 37-18 west. big big Eckstein monument
 37-18 east. Cook John N Aug 14, 1823 Aug 20, 1892 ag 69 6 ds
 Cook Margaretha Apr 15, 1834 Jun 8, 1901*
 Cook Henry W Jun 28, 1857 Jun 29, 1893 ag 36 1 d*
 four unmarked graves
 37-22 head stone FATHER
 37-23 head stone MOTHER
 37-25 big Busch monument gray John Busch 1845 1912*
 Busch Elizabeth 1850 1923*
 37-26 Busch Caroline 1871 1945
 eight unmarked graves
 37-31 Miller Wilhelm F Dec 2, 1815 Mar 6, 1906* BIG GRAY monument
 Miller Maria C Dec 22, 1818 Mar 17, 1906*
 37-32 Masch Louise Mar 12, 1865 Oct 17, 1903 *
 five unmarked graves
 seven unmarked graves
 37-43 head stone Karl Lorenz Grossvater*
 37-44 head stone Frederick Lorenz
 37-43 Lorenz Ernest Jun 27 1832 Mar 22, 1912* BIG GRAY stone
 {Lorenz Ernest Sr Mar 22 1912 widower 79 3 25 Heart problem }
 Lorenz Hanna on Ernst stone Mar 22, 1844 Apr 11, 1911* BIG GRAY stone
 Lorenz Friedrich bruder small marker*
 37-46 MUTTER
 37-47 unmarked grave old stone unreadable
 Hecker? Darling infant? small marker*
 37-23 head stone unreadable
 37-51 Frederick Hecker old TALL dark gray MOSS COVERED monument
 Hecker Friedrich Apr 2, 1844 Dec 19, 1892*
 Bower Mary Apr 4, 1819 Mar 2, 1890 on Hecker plot*
 37-52 head stone unreadable
 37-53 head stone FATHER
 37-54 head stone MOTHER
 37- Zaldert Hacker 1876 1952
 37- head stone unreadable
 37- head stone FATHER 37-56 37-56
 37-57 west. Eberhart Liene frau von Jacob nebst Kind Apr 15, 1863 Jun 10, 1881*
 Eberhart 1854-1884
 37-57 west. Ide Bermon
 37-57 Hacker Dorothea Frau von Georg Hacker May 14, 1812 Feb 26, 1881*
 37-57 head stone FATHER
 not recorded **Child** 37-39 Barg Idi Hermini Jul 14, 1884 Oct 7, 1884 tochter von Carl & Sophia*
 37-58 Barg Joe Sep 19, 1875 Jul 2, 1896 * TALL RED monument
 Barg Sophia Aug 22, 1845 Dec 20, 1900*
 Barg Chas Mar 3, 1845 Mar 7, 1928*
 37-59 unreadable six unmarked graves
 Totals: probable persons based on stones 33; total graves 66; total unmarked graves 27
 Row 38 from W. Landmark is Stimm small gray stone
 38-2 Stimm Gottlieb Mar 27 1814 sep 27, 1894*
 38-3 head stone needs careful read
 unmarked grave spouse of Gottlieb Stimm

38-4 Schild Wilhelmine Sep 18, 1846 Aug 27, 1919* TALL old
 Schild Karl Dec 16, 1836 Jul 5, 1908*
 38-5 head stone needs careful read
 were stones MOTHER, FATHER four unmarked graves
 38-9 Vogt Charles 1877 1945
 38-10 Vogt Mathilde Thlie 1884 1959*
 38-11 Vogt Charles 1830 1889*
 Vogt Catherine on Charles stone 1841 1912*
 two unmarked graves
 38-14 head stone FATHER
 five unmarked graves
 38-18 Licht John 1812 1903*
 38-19 Licht Friedericke 1815 1887*
 Schurer Wm Oct 23, 1839 Jan 23, 1898*
 38-23 Schuer BIG gray monument
 Schurer Marie mother 1849 1929*
 Schuer senie Frau Friederike geb Lucht Jun 5, 1850 Apr 2, 1919*
 Schuer Fridrich Sep 27, 1835 Nov 16, 1900
 Schuer Friederike 1850 1919
 Schurer Dorathe Hanna Oct 18, 1799 zu Woosmer Mecklenburg Schwerin Jul 22, 1893*
 38-25 Schurer Rika*
 38-26 Schurer Friedrich*
 38-27 head stone MOTHER
 38-29 Russ tall worn monument
 Russ Joachim H Oct 11, 1821 Jul 22, 1898* Mecklenburg Schwerin
 Russ Lotta L apr 25, 1818 Nov 6, 1906*
 38-28 head stone needs careful read had stone JHR
 38-30 head stone unreadable
 stone Mutter
 six unmarked graves
 38-35 Kutchey Minnie 1876 1905 erected by her son Paul*
 38-35 east. Schunieng Anna Sofie Ellise Mecklenburg 1832 Dec 21, 1891*flat
 not recorded **Child** 38-36 east. Maas Ida F dau of Maas baby Sep 11, 1874 ag 1yr 3mo*flat
 Maas Henry J 1872 1929* "Father"
 Maas Joseph R Sep 2, 1906 Mar 27, 1905
 38-36 unmarked grave broken stone fragments
 was first listed in row 40 in 1939
 38-37 Kauffmann Charles 1837 1940*
 38-38 Kauffmann Emma 1872 1946*
 38-39 Kauffmann Daniel 1899 1977*
 38-39 Kauffmann Edith 1905 1972*
 four unmarked graves
 38-43 1929-1916 worn needs study
 38-46 FATHER 38-47 Wade monument tall worn difficult to read had four names on it
 Wade Wilhelmine Apr 27, 1844 Nov 29, 1916* stone mid row to East
 not recorded **Child** Wade Hermann Dec 3, 1880 Aug 7, 1881* needs careful read
 Wade Karl Sep 24, 1845 Feb 7, 1894
 not recorded **Child** Wade Ernest Sep 25, 1875 Dec 11, 1893
 38-47 stone unreadable
 had markers Ernst, and FATHER
 fourteen unmarked graves

not recorded **Child** Beier or Wade Herman Nov 15, 1880 Aug 15 1881
not recorded **Child** Beier Allmiene Mar 11, 1886 Mar 15, 1895
38-53 Finerock William I 1880 1960*
Finerock Mae I 1887 1962*
38- unreadable SAD]

not recorded **Child** Pinnow Caroline Tochter von Wilhelm & Hanna Oct 4, 1882 Sep 26, 1885* [3
not recorded **Child** 38-56 Pinnow Sophia Tochter von Wilhelm & Hanna Oct 18, 1880 Oct 11,
1885*[5] 38-57 William Pennow needs careful read
Hannah Pennow needs careful read
38-58 Gabuene Pinnow needs careful read

Totals: probable persons based on stones 39; total graves 66; total unmarked graves 27
Row 39 from W. Landmark is Remms tall gray old about 4 yards from fence
unmarked graves
39-4 east. Kulp Charles W 1890 1946* red flat stone to East
39-4 Remus Wilhelm C F Apr 8, 1824 Apr 11, 1896 ag 72 tall gray old*
Remus Fridericke S M b Jul 15, 1828* seven unmarked graves
39-19 several corner markers
three unmarked graves
39-12 Ackermann Wilhelm May 29, 1834 May 29, 1889*
Ackermann Matilda geb Steffens Jun 6, 1843 Aug 20, 1889*
39-13 W A
ten unmarked graves
39-15 several more corner markers
eight unmarked graves
39- head stone unreadable
39- Stephens Ernst is buried here no marker unmarked grave*
39-25 head stone unreadable probably Hildebrand
39-26 Hildebrand P G Mar 12, 1818 Sep 1, 1889* gray medium height
Hildebrand Ellenora on P G stone Apr 28, 1824 Aug 1, 1902*
39-29 Bull Christian 1852 1930*
39-30 Bull Christine 1853 1928*
39-31 Bull monument big tall gray monument
39-33 Bull Ludwig 1888*
Bull George 1889*
39-35 head stone needs careful read
39-36 Krieger Gustie Aug 15, 1833 Jan 10, 1873*
four unmarked graves
39-40 Kreger big gray monument
five unmarked graves
39-45 Porath William Dec 6, 1821 Aug 16, 1906* big red
Porath Henrietta Feb 26, 1828 Aug 31, 1909* big big red
39-47 Panzer Ernestine frau v Carl Nov 14, 1854 Nov 20, 1879*
not recorded **Child** Panzer Emma E tochter von Carl* Ernestine Sep 5, 1879 Sep 23, 1879*
39-48 needs careful read worn
39-49 Martz Henry Philip Sep 20, 1874 Feb 5, 1909 ag 34*
39-50 Bertha Barg 1880-1922 six unmarked graves
39-56 Perry Helen A 1902* no year
Perry Doyle 1899 1962* five unmarked graves
39-57 MOTHER
39-58 Brinkert TALL RED MONUMENT NEAR NORTH END.
Brinkert Margaret May 24, 1838 Jan 5, 1919*

not recorded **Child** Brinkert Friedrich May 7, 1838 Jun 12, 1897*
 Brinker Carl Fred Nov 25, 1870 Apr 16, 1887*
 39-60 head stone unreadable
 39-61 worn white stone by fence needs careful read
 moss covered 1875 1898?
 39-66 fence be careful not to fall in holes! Animal dens.
 Totals: probable persons based on stones 26; total graves 66; total unmarked graves 40
 Row 40 from W. Landmark is Alexander LOW RED about two years from fence
 40-2 Alexander Levi 1919 1944*
 40-3 Alexander Ferdinand? 1897 1971*
 40-4 Alexander Virginia 1912 1971*
 40-5 Alexander Hugh E USArmy Apr 20, 1923 Nov 16, 1977*
 four unmarked graves
 40-9 several corner markers
 three unmarked graves
 40-12 Mitchell Frederica or Frederick 1862 1941*
 40-13 Mitchell Robert 1875 1915*
 Mitchell Robert B d Oct 31, 1875 ag 40yr 10 m 14 d
 Mitchell Charles
 stone FATHER
 not recorded **Child** Mitchel Louie Aug 6, 1885 May 20, 1886*
 Mitchell Karl Aug 7, 1857 Oct 3, 1892
 Getz Barbara Apr 20 1877 ag 75 yrs 4 mo 16ds*
 40-15 Getz monument tall old needs careful read
 Getz Karl Aug 7, 1857 Oct 3, 1892*
 40-16 head stone Charley could be child
 40-17 stone Robert
 40-18 Getz needs careful read tall
 Getz George B June 14, 1866 Dec 28, 1911* old tall
 Getz Joseph Sep 7, 1831*
 Getz Mary wife of Joseph Apr 29, 1826 Apr 23, 1900*
 40-20 Getz George Jun 14, 1866 Dec 28, 1911
 40-20 corner stones
 40-23 Worn stone needs careful read
 40-24 Gillett Emma E on Bittner lot 1863 1950*
 40-26 Bittner Carl 1829 1901
 40-27 Bittner Caroline 1832 1893
 40-28 Bittner tall monument
 Bittner Charles Oct 29, 1829 Feb 21, 1901* had odd Fellows marker
 Bittner Caroline on Charles stone Jul 29, 1832 Dec 19, 1893*
 40-29 Eckstein Clara Sep 30, 1875 Feb 15, 1926*
 40-30 Eckstein Lloyd Oct 30, 1900 Mar 15, 1926*
 40-31 Eckstein William Dec 18, 1866 Nov 11, 1926*
 40-33 Mielke Mary May 23, 1875 May 1, 1944 red stone
 ten unmarked graves
 40-43 Wolgast Rose 1888 1976*
 40-44 Wolgast Max 1885 1935*
 40-45 head stone unreadable
 40-46 Beyer Wilhelm on Dora stone Feb 19, 1824 Dec 6, 1899* tall old
 Beyer Maria Dora geb Lahz Sep 8, 1830 Feb 22, 1913*
 Beyer? Edward 1893*

Beyer Clara 1893*
 Wade Wilhelm Jul 4, 1869 Oct 28 1897*
 40-47 head stone unreadable
 40-48 Borg? Wilhelm 1869 1897*
 40-49 Malkmas John Feb 10, 1826 Jul 24, 1895*
 40-51 Agustus Gesch old worn needs careful read
 40-52 Malkmas Wm 1878 1955*
 40-53 Malkmas Conrad 1838 1879*
 Malkmas Margaret 1842 1920*
 Malkmas John C Jul 6 1873 Apr 21, 1917
 eight unmarked graves

Totals: probable persons based on stones 38; total graves 66; total unmarked graves 28
 Row 41 from W. Landmark is Zorn big big gray
 two unmarked graves

41-3 Zorn Herman 1875 1912*
 41-4 Zorn monument big big gray
 41-5 Zorn Christian 1849 1922*
 41-7 Zorn Sophia 1849 1941*
 three unmarked graves
 41-9 Hartlein George L 1841 1913*
 41-11 Hartlein Fredericka 1837 1919*
 41-12 Hartlein big big monument gray
 eight unmarked graves
 41-19 Pennow Emma 1892 1976*
 41-19 head stone unreadable
 41-20 Pennow Frederich 1887 1969*

not recorded **Child** 41-21 underground stone
 41-23 Kreger Sarah Jun 18, 1870 Apr 11, 1923*
 41-24 Kreger William Sep 4, 1867 Feb 2, 1924
 41-25 Mable dau of Wm & S Kreger Nov 25, 1895 Jun 27, 1897*
 four unmarked graves
 41-28 Kreger monument big gray
 two unmarked graves
 41-29 head stone unreadable

41-30 flat needs careful read "21-18- 28 yrs"
 41-31 Hartsig Rosa A Feb 23, 1872 Apr 16, 1895 ag 23 SAD {Hartsig Rose apr
 14 1895 mar 23 consumption Charles Steffens Fraser MI rec 243}
 fifteen unmarked graves

not recorded **Child** 41-43 Rudolff Twin brothers
Child eight unmarked graves
 41-49 August Gesch 1876-1909
 Gesch August BIL of Makmas Dec 23, 1863 Jan 31, 1909
 41-51 Mary Gesch 1869-1953
 41-52 Allen W Gesch 1898-1965
 41-55 Joan B or John G Jul 8 1873 Apr 21 1917 needs careful read
 eight unmarked graves 41-63 fence

Totals: probable persons based on stones 20; total graves 66; total unmarked graves 46
 Row 42 from W. Landmark is Bower BIG RED unmarked grave
 42-3 Bower Lambert 1872 1944* flat 5' from fence
 42-4 Bower Leonard 1858 1920* four unmarked graves
 42-5 Bower BIG RED monument TILTING

Bauer Phillip Jul 22, 1822 Apr 17, 1899 on Katherine stone*
 Bauer Katherine Jan 7, 1832 Aug 5, 1917*
 42-6 head stone MOTHER Bower
 42-7 head stone FATHER
 42-10 head stone unreadable
 42-12 head stone unreadable Kolster
 42-12 Kolster big monument
 Koester Johann Apr 27, 1823 Feb 13, 1907*
 Koester Sophia on Johann stone Mar 2, 1821 May 30, 1908*
 not recorded **Child** Westphal Fredrich on Koester lot May 24, 1898 Sep 15, 1900* 6 unmarked grav
 42-15 head stone unreadable
 42-17 head stone Boldt
 42-18 Boldt Friedrich 1823 tall gray monument
 Boldt Friedrich Feb 8, 1823 Jul 10, 1896* tall
 Boldt Dorothea on Friedrich stone May 3, 1823 May 14, 1905*
 42-18 head stone unreadable two unmarked graves
 42-20 Barg Henry 1869 1929* corner stones B four unmarked graves
 42-24 head stone unreadable Ploeger
 42-26 Ploeger monument big tall red
 Ploeger C F Aug 18 1843*
 Ploeger Mary wife of C F Mar 16 1841*
 Skinner Louisa on Ploeger stone Oct 3, 1869 May 29, 1898
 42-27 Louisa Ploeger
 42-29 unmarked grave can see outline of two graves
 42-30 unmarked grave
 seven unmarked graves
 42-36 Rose Johann Karl Feb 14, 1806 Oct 2, 1893 ag 87y 7m 18d* Macomb
 County Record Carl old age 87-7-9d farm work single b Germany
 42-37 head stone unreadable
 42-39 head stone unreadable
 not recorded **Child** 42-40 Werth Wilhelmina C M Mar 17, 1876 Dec 12, 1881*
 Werth E*
 not recorded **Child** 42-41 Werth Anna K J Jan 4, 1874 Dec 11, 1881*
 Small marker Heir rucht Unser Vater* two unmarked graves
 42-43 Beyer Herman 1866 1922*
 42-44 Beyer Amelia 1867 1943*
 42-47 Wolgast Augusta W 1919 1944 sixteen unmarked graves
 Totals: probable persons based on stones 21; total graves 66; total unmarked graves 45
 Row 43 Landmark is Rickabush low gray to west of East drive 1 1/2' tall 3' from fence
 43-2 Rickabush Mary 1875 1939* township record b Detroit Nov 11, 1875 d 5 31, 1939
 ag 63-6-20 dau of Frank Sebert & ? of ? Wife of Louis Rickabush. Res 7thst, West side.
 43-4 Rickabush Lewis 1869 1952*
 43-5 Rickabush Alger 1915 1963* five unmarked graves
 43-10 Wolgast Frank
 43-11 Wholgast monument big
 Wolgast Frank their son Jan 24, 1883 Sep 1, 1903*
 Wolgast John Apr 24, 1844 Dec 22, 1918*
 Wolgast Sophia Feb 21, 1851 Jul 8, 1936*
 43-13 head stone MOTHER Wholgast
 43-14 head stone FATHER Wholgast
 43-17 Hartlein Charles J 1905 1972*

Hartlein Lillian C 1908 1998*
 43-18 Busch John F 1903 1975*
 43-20 Busch Edward 1873 1938*
 Busch Lillie on Edward stone 1876 1947*
 43-22 Bohringer Charlotte Oct 9, 1935 Dec 6, 1988 *
 Bohringer Robert Jr Sep 3, 1934 Jun 5, 1989*
 Bohringer Chas John Aug 28, 1969* four unmarked graves
 43-27 Busch Elmer E 1898 1978*
 Busch Alma E 1900 1986*
 Busch Mary 1867 1941*
 Busch Edward 1866 1943*
 six unmarked graves
 43-33 Well and water pipe
 43-35 Sieck Edward Jan 16, 1866 Jun 18, 1943*
 43-36 Sieck Mary Dec 15, 1867 Dec 4, 1941*
 43-38 Sieck monument big gray
 43-40 Awey Carl F Jan 10, 1825 Sep 24 1903*
 four unmarked graves
 43-45 Thimian Edward W died in service 1892 1918
 43-46 Thimian Anna 1871 1925 *
 43- Thimian Joseph J 1841 1917* stone gone
 43- Thimian Freda S 1838 1910* stone gone
 43-48 flat stone unreadable unmarked graves
 43-54 Oehmke Fritz Aug 27, 1872 Nov 17, 1914 given by sister Lena
 ten unmarked graves

Totals: probable persons based on stones 27; total graves 66; total unmarked graves 39

45-9 Ortman Johann Jul 9, 1888 Oct 30, 1907*
 45-10 head stone unreadable
 45-11 head stone MOTHER
 45-12 head stone FATHER
 45-14 Ortman Carl Nov 10, 1841 Sep 30, 1909* tall dark gray stone
 Ortman Louise Aug 4, 1843 Sep 11, 1931 Louisa*
 45-15 Boening Carl 1857 1922* red low stone
 45-16 Boening Wilhelm 1828 1924* flat stone
 45-17 Boening Monument big red
 45-18 Boening Anna 1869 1951*
 45-19 Boening Wilhelmina 1834 1906*
 not recorded **Child** 45-20 Boening Grace A 1905 1906* two unmarked graves
 45-22 head stone MOTHER
 45-23 head stone FATHER
 45-25 Measel John C on Caroline stone 1848 1935*
 Measel Caroline nee Kaiser 1856 1918*
 not recorded **Child** Measel George J son von J & C 1880 1892* or on foot stone
 45-26 Gallmeister Ethel 1906 1981*
 Gallmeister Otto 1903 1975*
 45-29 Dill Carolina 1860 1930*
 45-30 Dill Frederich 1850 1940*
 45-31 F Dill monument 2 ½ feet tall gray
 45-32 Dill John 1857 1951*
 45-33 Dill frau John 1888 1910*
 45- Dill Martha wife of John 1888 1910*

unmarked graves
45-35 square stone Preisel
not recorded **Child** 45-36 Preisel Cora P 1891 1903*
45-37 Preisel John 1847 1920*
45-38 Preisel Hannah 1858 1933*
45-39 Hartsig Julia E 1887 1929 *
45-40 Preisel Viola C 1898 1938*
three unmarked graves
45-43 Mehnert Gustav 1846 1908*
45-44 Mehnert Caroline 1848 1935* township record b Germany Nov 10, 1848 d
Oct 21, 1935 wife of Gustive Mehnert. Dau of Louis Zeibg & ? of Germany.
Unmarked grave
45-46 Fred Mehnert 1879-1951
six unmarked graves
45-51 Qualmann Carl H Apr 27, 1845 May 5, 1914 OLD TALL GRAY
Qualmann Auguste W b Jan 25, 1851
unmarked grave
not recorded **Child** 45-54 Qualmann Carl J Feb 20, 1878 Jul 19, 1878 has lamb*
45-55 part of head stone needs careful read
45- marker not visible any longer
45-55 square marker Qualman six unmarked graves
45- not visible King Fred 1879 1951*
45-59 King Fred E 1904 1954* 45-62 fence
Totals: probable persons based on stones 30; total graves 66; total unmarked graves 36
six unmarked graves
not recorded **Child** 46-7 Momrow Raymond E Apr 17, 1926 Aug 12, 1927* nine unmarked graves
46-15 head stone unreadable
46-16 head stone unreadable
46-17 Schuer monument big
Schuer Louise Oct 6, 1830 Mar 12, 1914*
Schuer Joachim Mar 10, 1834 Dec 24, 1911* four unmarked graves
46-22 Bower Ida Mar 12, 1871 May 8, 1948*
46-23 Bower John Aug 27, 1870 May 23, 1935*
46-25 J Bower monument big
46-27 Bower Walter Dec 23, 1895 Dec 13, 1915* four unmarked graves
46-30 Stiens Mother 1858 1934* big red low
Stiens Father 1856 1924*
not recorded **Child** Stiens Mildred 1899 1916*
46-31 stone in ground unreadable
46-32 Grafnitz Joseph C 1879 1956* needs careful read
unmarked graves
46-40 stone in ground needs careful read
not recorded **Child** 46-49 Abbey Richard 1928 1932*
not recorded **Child** Abbey Ethel 1925 1925*
Abbey Otto J 1890 1978* Pvt US Army 1890 1978
Abbey Mary M 1901 1971*
46-50 Mistopocous big low Elsie Dec 20, 1926
Peter Mistopocous Feb 2, 1926 Aug 14, 2003 WORLD WAR II
46- small square stone spelled Qhalman fifteen unmarked graves
Totals: probable persons based on stones 16; total graves 66; total unmarked graves 50
Row 47 from W. Landmark is Thieme dark gray round 4 yards from fence

unmarked grave
 47-2 Thieme Margaret small marker*
 47-3 head stone FATHER
 47-4 Thieme Hulda Dec 26, 1863 Dec 11, 1927*
 Thieme Arno Sep 15, 1864 Oct 10, 1924*
 47-5 head stone MOTHER five unmarked graves
 47-10 Strauss Emile H E 1863 1915*
 47-11 Strauss Carl 1865 1944*
 47-12 Strauss Edwin 1905 1972*
 47-13 Strauss Elsie 1904 1969*
 47-14 Strauss big red marker no one listed on it three unmarked graves
 47-22 Degurski Otto Mar 16, 1864 Feb 25, 1932* seven unmarked graves
 47-24 Diehl William Nov 23, 1858 Jan 25, 1918 under tree*
 47-26 Rugenstein Ida 1884 1971*
 Rugenstein Charles 1878 1963
 47- small stone unreadable nine unmarked graves
 47-33 Gloede Lena Aug 14, 1874 Warren Township, Mar 14, 1921* big
 Gloede John Nov 15, 1864 Feb 22, 1945*
 Gloede Florence W Apr 7, 1914 Apr 14, 1968*
 47-35 Dobberowsky Lydia Stewart 1904 1988* pink stone
 Dobberowsky Herbert C 1906 1942* twenty unmarked graves
 47-37 Arnold Sophia C Jan 17, 1907 Jan 8, 1988*
 47-54 Boening Frederich 1880 1977*
 47-55 Hughes Rose 1886 1955* eight unmarked graves

Totals: probable persons based on stones 20; total graves 66; total unmarked graves 46

Lot Row 48 from W. Landmark is Miller big gray stone 4 yards from fence
 48-4 Miller Margaret Meinrow nee Miller May 26, 1909 Dec 15, 1936*
 48-5 Miller monument big gray stone
 48-6 Miller John A Oct 6, 1878*
 48-7 Miller Garrie Getz wife of John A Miller Jul 11, 1887 Apr 31, 1917*
 48-12 Hartlein Frederick E Dec 25, 1917 Dec 17, 2002
 48-13 Hartlein Fred 1881 1965*
 Hartlein Olga 1886 1966*

not recorded **Child** 48-14 Hartlein baby dau of Fred and Olga Dec 2, 1914* no name on stone

48-18 Keller Helen M 1892 1964*

Keller John A 1890 1973*

fourteen unmarked graves

48-30 Presnell Julia 1906 1989*

Presnell Robert 1904 1979*

48-33 Warren Beulah May 18, 1938

Jack Warren Sep 25, 1934 Mar 25, 1981 red stone

eighteen unmarked graves

48-49 Ervine Rose 1894 1943*

48-50 Ervine George July 13, 1899 May 17, 1965*

not recorded **Child** 48-52 Jackson Brian Royal on Ervine lot Jun 9, 1954 Jul 19, 1956*

eight unmarked graves

Totals: probable persons based on stones 16; total graves 66; total unmarked graves 50

Row 49 from W. Landmark is Hoxsey – Getz big gray stone 5 yards from fence
 unmarked graves

49-5 Hoxsey – Getz big gray stone

Hoxsey Glenn 1910 1985*

Hoxsey Marian 1910 1987*
 49-7 Getz Anna wife of Edward Hoxsey Jun 17, 1890 Dec 29, 1922*
 49-8 corner stone "M" eight unmarked graves

49-16 Wilson David 1846 1934* township record b Owen Sound, Ont Jun 6, 1845
 d Mar 14, 1933 son of William Wilson & ? of Canada. Husband jof Mary Schutt.
 Retired flour-feed miller res 5711 Fillmore St.

49-18 Wilson Mary 1860 1945*
 49-19 Abey John on Wilson lot 1883 1949*
 49-40 Thomas Clara 1909 1994*

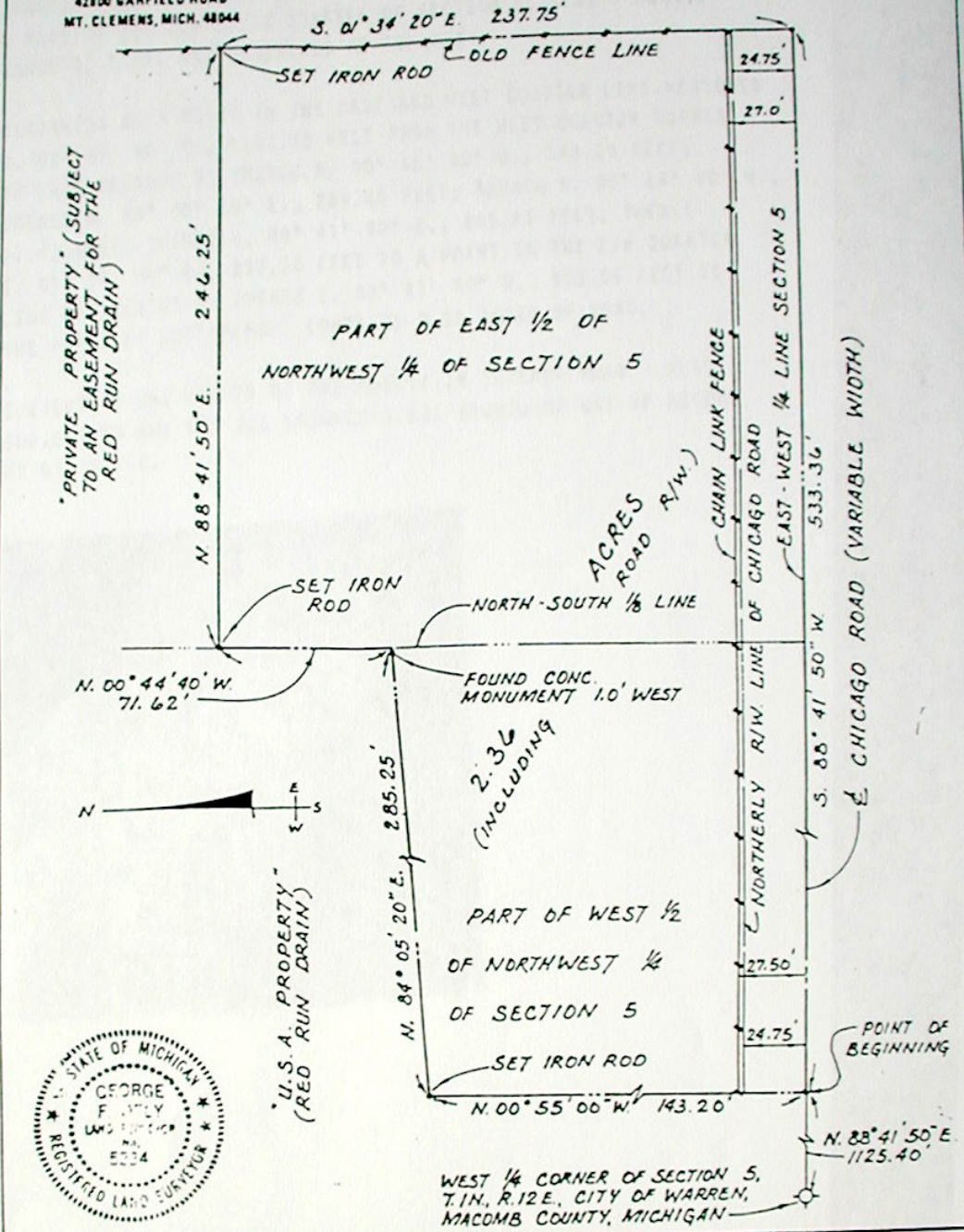
not recorded **Child** 49-42 Thomas Velma 1933 1942*
 49-43 Weiss Michael 1876 1943*
 49-45 Sobieck Amilia Weiss 1882 1972*
 49-47 corner stone unreadable

not recorded **Child** Willie Lyons per township book
 not recorded **Child** Harry Didier per township book
 not recorded **Child** Mary Steffens per township book

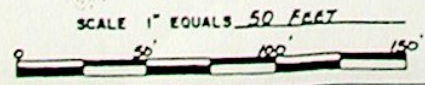
Certificate of Survey

ANDERSON, ECKSTEIN & WESTRICK, INC.
42800 GARFIELD ROAD
MT. CLEMENS, MICH. 48044

PHONE NUMBER
(313) 288-1234



CERTIFIED TO WARREN UNION CEMETERY
ADDRESS CHICAGO ROAD
CITY & STATE WARREN, MICHIGAN
TOWNSHIP WARREN T.1N., R.12E.
SECTION 5
COUNTY MACOMB



AEW NO.

I hereby certify that I have surveyed and mapped the land above and/or described on JULY 14 19 80 and that the ratio of closure on the unadjusted field observations of such survey was 1/ 20,000 and that all of the requirements of Public Act 132, of 1970 have been complied with.

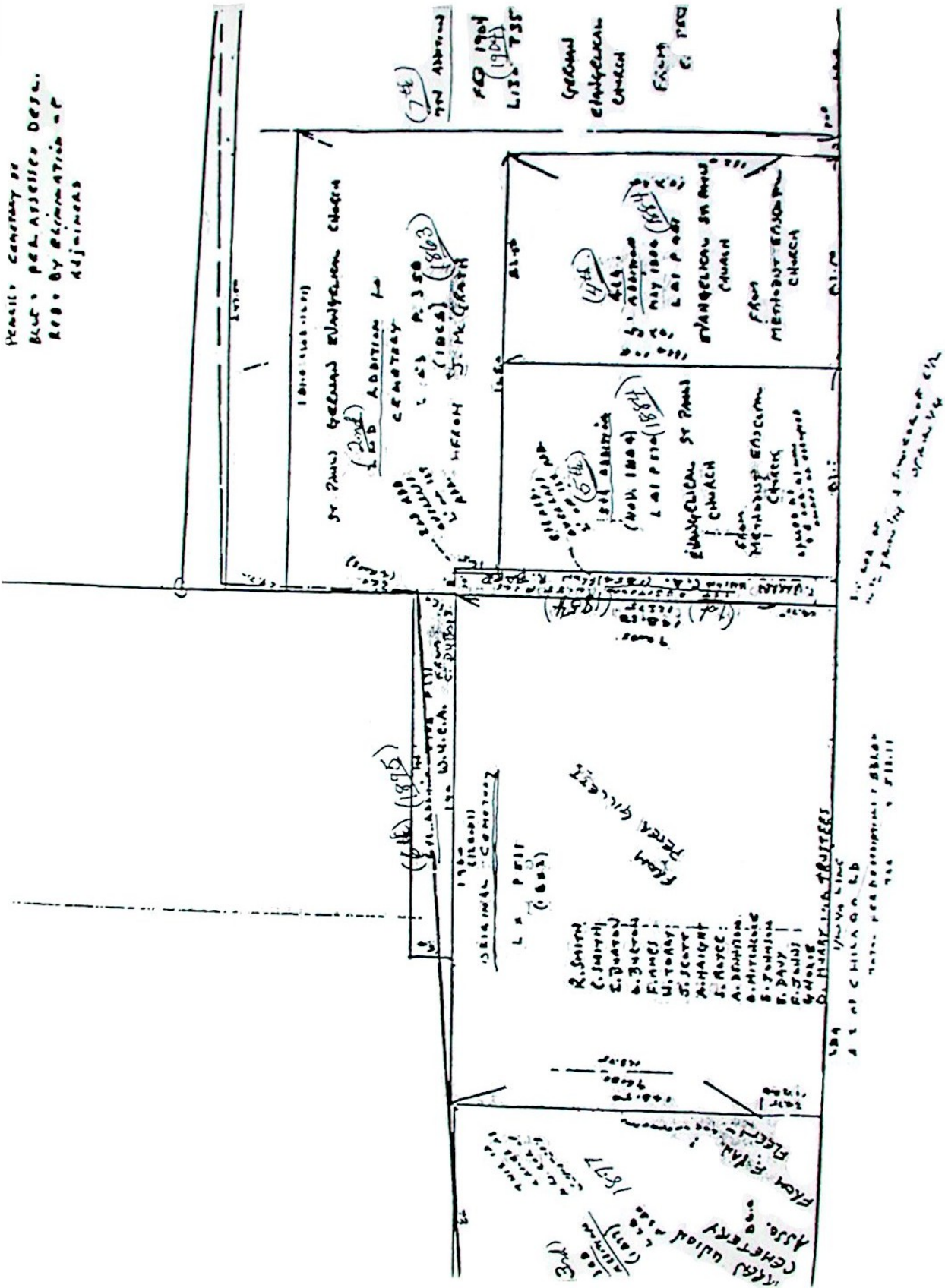
Bearings shown on this survey were determined as follows:
FROM ADJOINING DESCRIPTION (RED RUN DRAIN)

George F. Dely
GEORGE F. DELY #5234 REGISTERED LAND SURVEYOR

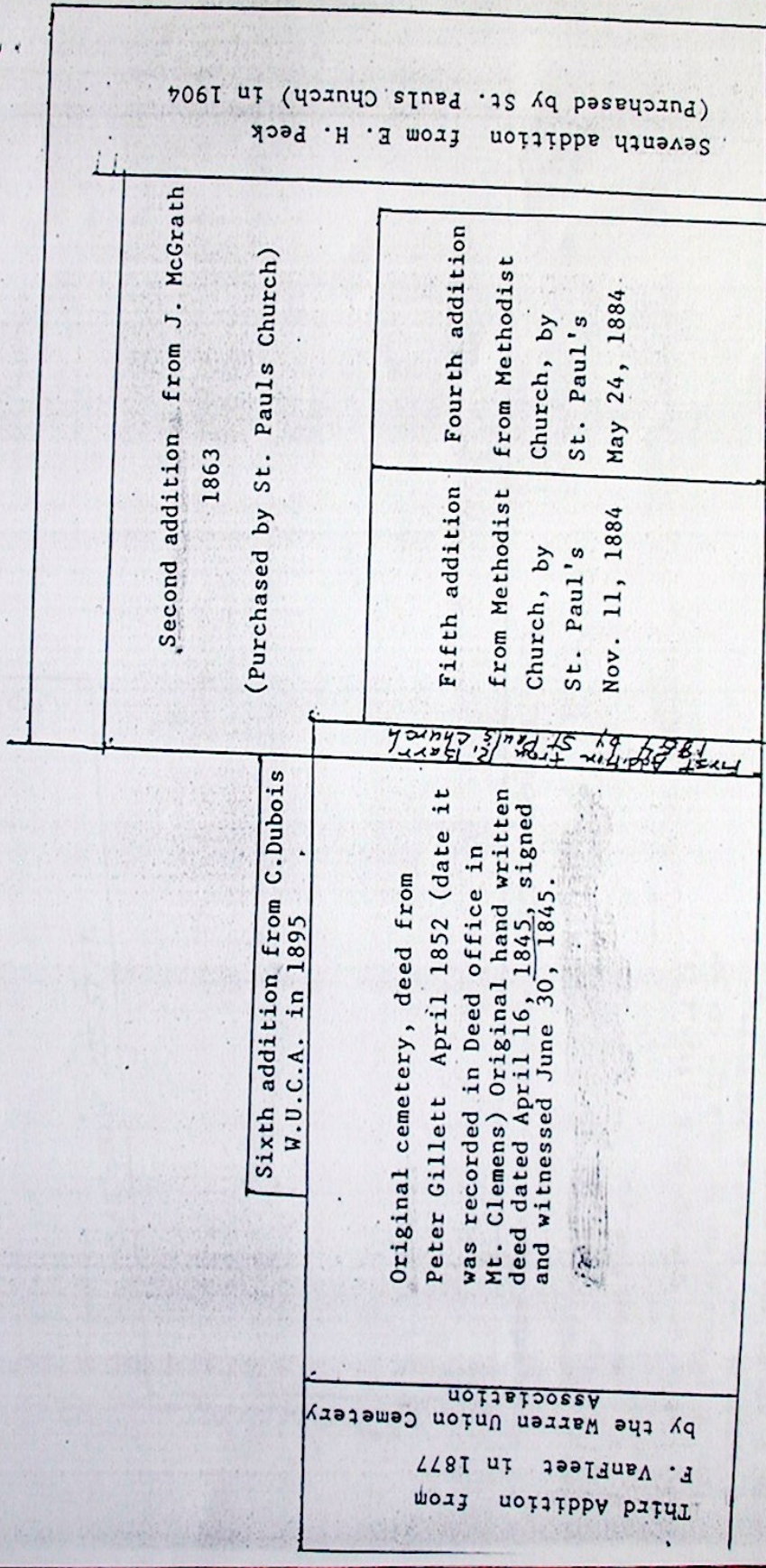
A.F.W. NO. 1976

SHEET NO 1 OF 2

Small Cemetery of
 Blue Passes Defn.
 Run by Elimination of
 Adjoints



The Warren Union Cemetery came into being with the First Methodist Church of Warren. The Methodist Church of Warren was first organized in November of 1845. On March 29, 1852 members of the Methodist Church formed a corporation called the Warren Union Cemetery Association. The German Evangelical Church (St. Pauls) was not organized until 1864.



Third Addition from
F. VanFleet in 1877
by the Warren Union Cemetery
Association

Sixth addition from C. Dubois
W.U.C.A. in 1895

Original cemetery, deed from
Peter Gillett April 1852 (date it
was recorded in Deed office in
Mt. Clemens) Original hand written
deed dated April 16, 1845, signed
and witnessed June 30, 1845.

First Addition from St Pauls Church
1864

Second addition from J. McGrath
1863
(Purchased by St. Pauls Church)

Fifth addition
from Methodist
Church, by
St. Paul's
Nov. 11, 1884

Fourth addition
from Methodist
Church, by
St. Paul's
May 24, 1884.

Seventh addition from E. H. Peck
(Purchased by St. Pauls Church) in 1904

CHICAGO ROAD

WARREN UNION CEMETERY

DRAWN BY DEPT
ENGINEERING CITY OF WARREN
1977

$50^{\circ}30'W$ 72.8 FT.

$S87^{\circ}59'10''W$ 245.11 FT.

$S85^{\circ}20'W$ 285.57 FT.

$50^{\circ}11'W$ 143.1 FT.

$N0^{\circ}03'W$ 247.99 FT.

Warren Union Cemetery Association $N07^{\circ}56'30''E$ 533.11 FT.

Plate # H 125 NH 1 C
Tin, R 12 E Section 5
Warren, Michigan

Beg at a pt $N89^{\circ}56'30''E$ 1125.4 ft.
From W $\frac{1}{2}$ Post of Sec 5; th $N89^{\circ}56'30''E$
E 533.11 Ft. Th $N0^{\circ}03'W$ 247.39 Ft.
Th $S87^{\circ}59'10''W$ 245.11 Ft. Th $S85^{\circ}20'W$
285.57 Ft. Th $S85^{\circ}20'W$ 285.57 Ft.
Th $S85^{\circ}20'W$ 143.1 Ft to Pt of Beg.

Reg. No. 15

W DEED
QD DEED

No. L130 P835
Dated 2-27-03 Con. \$
Dated 5/31/04 Con. \$ 2000.
Ack. same

Mathias Berger Jr.
ie: "Whwick"
Barbara E. Berger Evangelical
St. Paul Church of Warren

Rec'd 6-11-04
Rec'd 5/31/04
Conveys land in the twp
Conveys land in the
of Warren Macomb County, Mich.,
of Macomb County, Mich.
described as: The w 1/2 of the ne 1/4 of the sw

1/2 of sec 5-in sd twp of Warren contng 20.66 acs of ld be the same m o l.
at the se cor of ldsxxxx now owned by the Warren
Union Cemetery Association th n 8 rds th s 8 rds th w 10
rds to the pob sd abvdscn ld beg on the sw cor of the e 1/2 of the n 1/2
of sec 5-1-12 MCM Reserving the shed & twick now on the xxxxx prop

1884

Reg. No. 32

Q DEED

No. L187 P. 570

Frank Reddick
The Evangelical St. Pauls Church of
Warren

Dated 11/20/84 Con. \$ 10100
Ack. same
Rec'd 12/12/84
Conveys land in the
of Warren Macomb County, Mich.,

at these cor of ld now owned & occupied by the Warren Union Cemetery & the
Association th n 8 rds th s 10 rds th s 8 rds th w 10 rds to the l 10 acs of
pob contg 1/4 of an acre of ld excepting the rd beg on the sw cor
of the e 1/2 of the n 1/2 of sec 5-1-12 MCM

on the E. Lda of Benjamin Huntington Lt head
from the north to the M. E. Church propy of
A Brewer stated (no c) Lda connected to Mrs
Gullings & Lda sold to Phoebe Metros. Said
Lda by Ad M. E. Church propy Ad Lda
to be sold to Mrs. Colclander & Lda
by Lda of alongo. Fred W. Cartwright
Harrington cony in all 27 acres of Lda m/l

Eden M. Dany does not sign or ask for witness
of Elizabeth Dany deed
See Off. 2395 Ado pg 430/84

Act. sume
Recd 10/20/84
Conveys land in the
of Warren
Marion County, Mo

described as ... 33 rds & 11 l.
the 50 1/2 of ... 5 of ad. Top of
the 50 rds th 5 rds to the ...

the no cor of
the 50 rds th 5 rds

Pl's 55, 58 to 64, 66 to 68, 79 & 85

Reg. No.

WEED

No.

L 90

P. 412

Gen M. Davy widow
Elizabeth Davy deid
to

William A. Reddick

Dated June 6, 1893 Con. \$ 2400.00

Ack. *Elizabeth*

Rec'd June 23, 1893

Conveys land in the Township
of *Waverly*, Macomb County, Mich.,

described as: Being a part of &
included in the NE 1/4 of

Sec 5 in T 1 N of
the 12 E in the State of Mich. & added as follows: N. of
the Hwy & S. of Waverly in Twp M. E. Church prop
- Street leading from the east thereof to
Bremer M. E. Parson age. Halsey McCall &
German Lutheran Church property & deid